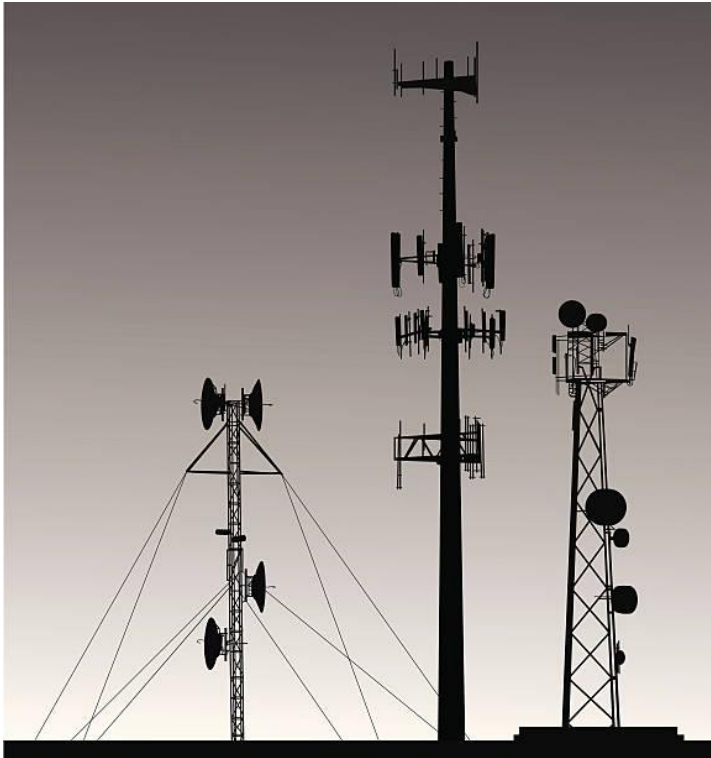




U.S. Department of the Interior
Bureau of Land Management

Uncommon Dialogue

BLM Communications Uses/Hydropower Partnerships



Kerri-Anne Thorpe, National Communication Uses and Hydropower Program Lead
HQ-350 - Lands, Realty, and Cadastral Survey, Southern Nevada District Office

Public Land and Resource Uses

What uses of public lands and resources are you or your program engaged with?

Share in the chat or unmute.



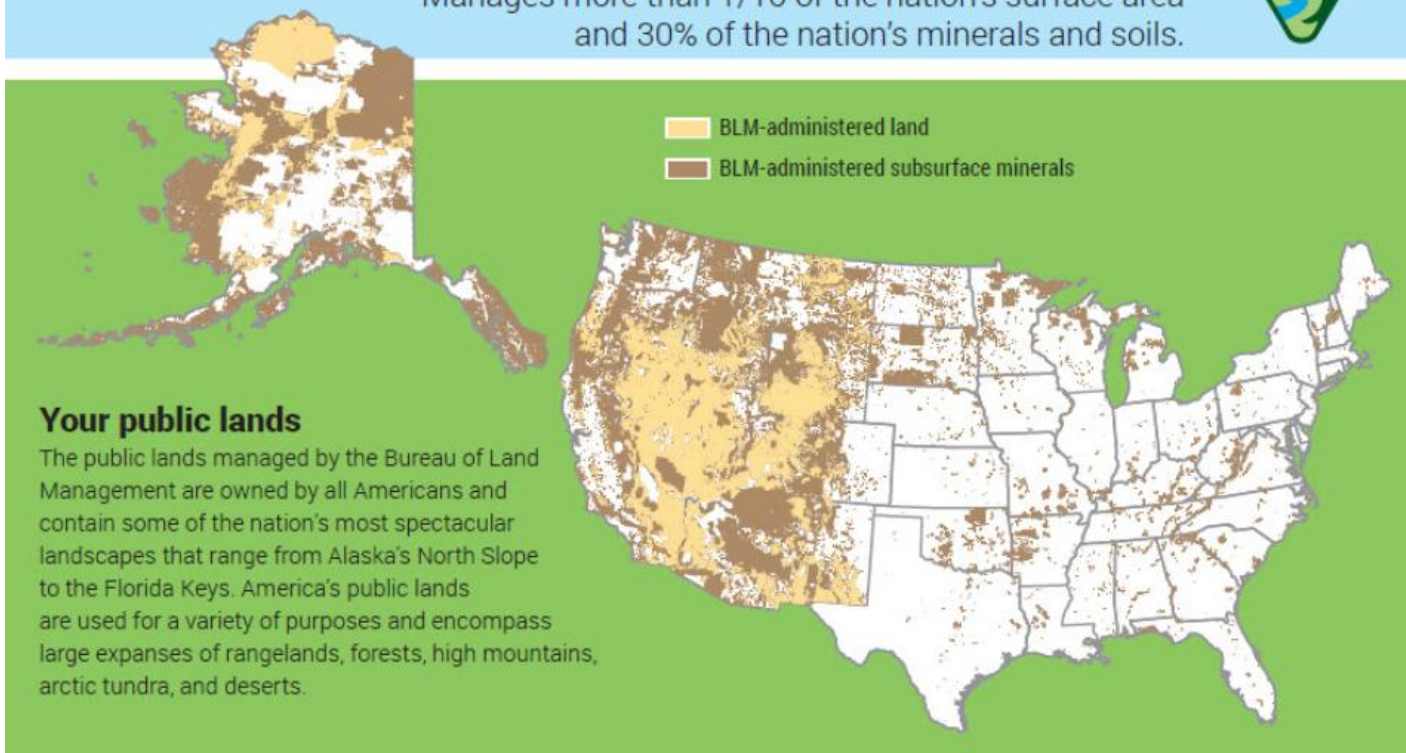


A Multiple-Use and Sustained Yield Mission

The Bureau of Land Management's mission is to sustain the health, diversity, and productivity of public lands for the use and enjoyment of present and future generations.

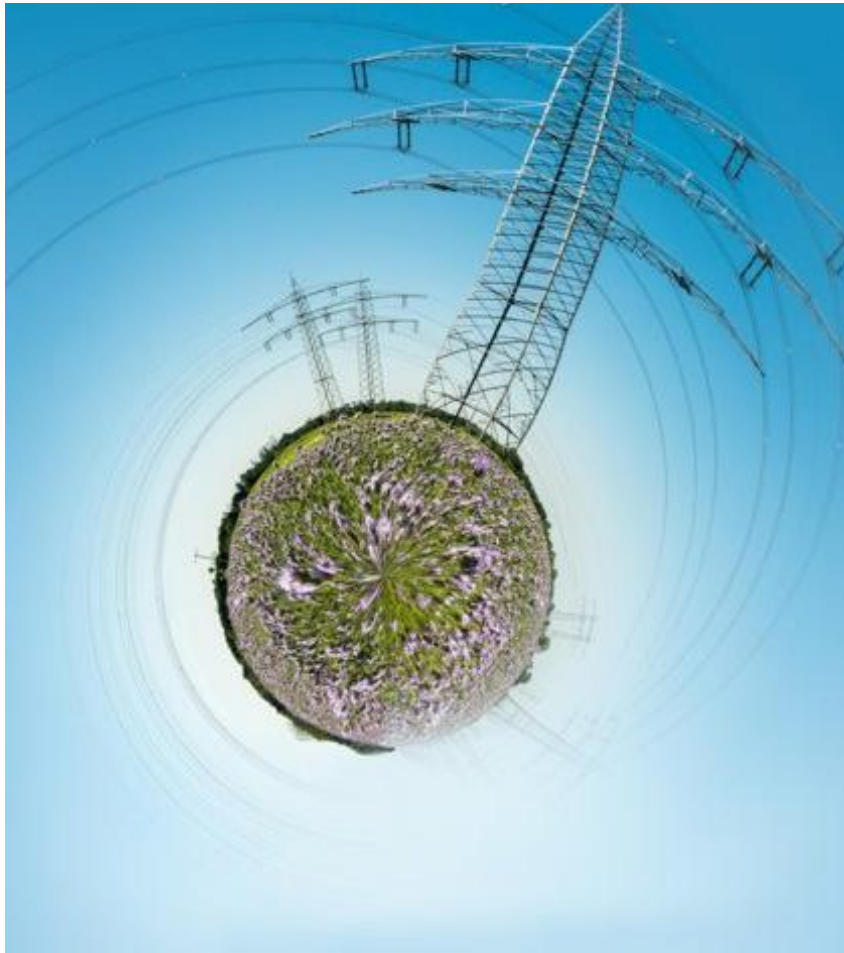
The Bureau of Land Management

Manages more than 1/10 of the nation's surface area
and 30% of the nation's minerals and soils.





OUR GUIDING PRINCIPLES

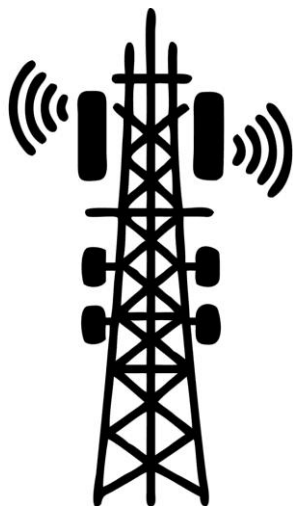


- To improve the health and productivity of the land to support the BLM multiple-use mission.
- To cultivate community-based conservation, citizen-centered stewardship, and partnership through consultation, cooperation, and communication.
- To respect, include, value, and support our employees, giving them resources and opportunities to succeed.
- To pursue excellence in business practices, improve accountability to our stakeholders, and deliver better service to our customers.



Where I fit in....

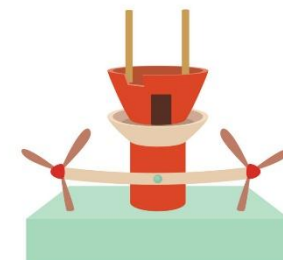
Communications Uses vs Hydropower



- Permitting
 - Policy
 - Training
 - Guidance



OPTICAL FIBER





Partners

- National Organizations
- Tribal Partnerships
- Community Associations
- Educational Institutions
- Nonprofit Organizations





COMMUNICATIONS USES

Infrastructure Consolidation Benefits

Co-location consolidates towers, access roads, and power systems to reduce landscape disturbance and speed connectivity deployment.

Cost and Maintenance Efficiency

Shared infrastructure lowers long-term costs for maintenance and capital improvements through collective use.





COMMUNICATIONS USES

Public Safety Enhancements

Co-location supports safety by enabling backup power, grounding, and vegetation clearing benefiting all tenants.

Standardized Site Protocols

Pre-agreed standards for access, grounding, and equipment placement reduce delays and improve execution efficiency.





HYDROPOWER



Collaborative Partnership Model

Utilities, power marketers, and federal agencies collaborate closely to coordinate vegetation management efforts for better outcomes.

System Reliability and Habitat Protection

Vegetation prescriptions balance system reliability with habitat protection and wildfire risk mitigation within transmission corridors.



HYDROPOWER



Synchronized Scheduling and Safety

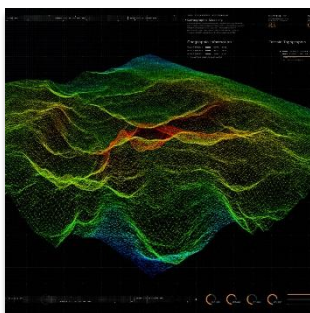
Synchronizing schedules reduces outages, avoids duplicative work, and follows common safety and communication protocols.

Ecological and Regulatory Integration

Integrating ecological, operational, and regulatory perspectives improves vegetation management outcomes across all dimensions.



SHARED DATA



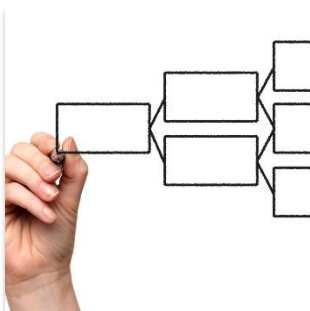
Data Integration and Standardization

Shared GIS layers and standardized environmental data reduce inconsistencies and speed decision-making.



Programmatic Analyses Benefits

Region-wide surveys and assessments use vetted data to avoid repetitive studies in similar projects.



Data Governance and Trust

Version control, data stewards, and refresh cycles build trust and transparency in shared datasets.



Bridge Strategies Across Communications and Hydropower

Tribal Co-Stewardship

Collaborate early with Tribal governments to co-design mitigation strategies using cultural expertise.

Wildfire Resilience

Implement coordinated hardening, fuels reduction, and outage protocols across hydropower and communications.





Bridge Strategies Across Communications and Hydropower

Joint Emergency Playbooks

Integrate utilities, carriers, and emergency responders for unified and rapid outage response.

Integrated System Planning

Networked approaches reduce risks and inefficiencies, creating resilient and accountable partnerships.





BENEFITS



Collaborative Planning Benefits

Early collaboration among utilities and communities reduces environmental impact and streamlines project timelines.



Holistic Approach

Planning enables integrated decision-making rather than isolated actions, enhancing efficiency.



Stakeholder Engagement

Involving Tribal governments, local communities, and agencies builds trust and mitigates project risks.

Interaction

What do you need from your Partners?



And what do your partners need from you?



WHAT PARTNERS NEED FROM BLM

Predictable Review Windows

Partners need predictable review windows to effectively plan construction seasons and mobilization schedules.

Clear Communication Channels

A clear and reliable point of contact reduces uncertainty and improves communication efficiency with partners.





WHAT PARTNERS NEED FROM BLM

Standardized Study Requirements

Standardized checklists and data schemas help partners submit compliant study packets the first time.

Access to Project Resources

Access to construction calendars, survey requirements, and site sensitivities enables proactive partner planning.





WHAT BLM NEEDS FROM THE NETWORK



Early Work Notification

Early notice of proposed projects helps BLM plan staff and compliance activities efficiently.

Complete Study Packets

Standardized and complete study packets with all baseline data shorten BLM review timelines.



WHAT BLM NEEDS FROM THE NETWORK



Realistic Mitigation Proposals

Mitigation proposals should include monitoring plans and potential cost-sharing for corridor maintenance.

Consistent Emergency Participation

Active involvement in outage management and emergency response planning ensures operational reliability.



EXCHANGE

Category	Partner Commitment	BLM Commitment
Data	Provide standardized, version-controlled datasets	Publish data schemas and maintain updated GIS layers
Permitting	Submit complete, consolidated study packets	Offer predictable review windows and clear checklists
O&M	Coordinate outage and access notifications	Maintain communication pathways for field operations

Partnership Best Practices

- Onboarding new partners to a partnership
- Working with formal and informal agreements
- Facilitation practices and regular partner meetings





Questions?

