

# SOCIAL SCIENCE TOOLS

Featuring the Economic  
Profile System (EPS) Tools



M.J. Murdock  
CHARITABLE TRUST

THE  
KRESGE  
FOUNDATION

# What social and/or economic trends are present in your community?



Industries

Housing

Land use

Population

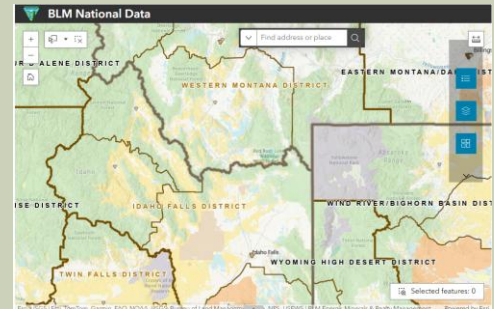
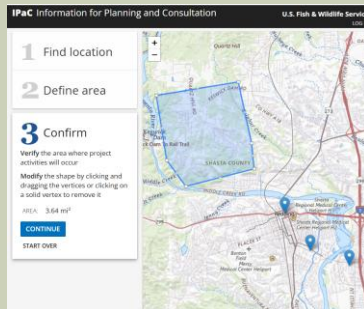
Education

Engagement

...



# What tools or data sources do you use (or contribute to)?



# EXPLORING THE HUMAN DIMENSIONS

- What would we like to know about the communities we live and work in?
- What information would help us better understand the social and economic factors and trends affecting the communities we serve?
- What information might help us to describe the value of our work to communities and the public?



# ECONOMIC PROFILE SYSTEM (EPS) TOOLS

- Provide access to data for communities across the country
- Use credible public data sources and interactive mapping
- Create customized reports for counties, states, Tribal lands and other land units
- Provide context to inform community assessments
- Help us tell a story



# DEMO OF THE EPS TOOLS

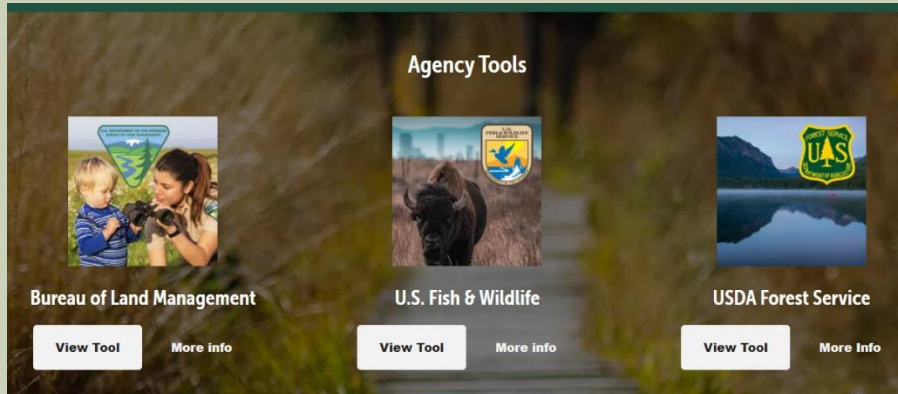
## Navigate to your starting site

**General Data:** <https://headwaterseconomics.org/tools/economic-profile-system>

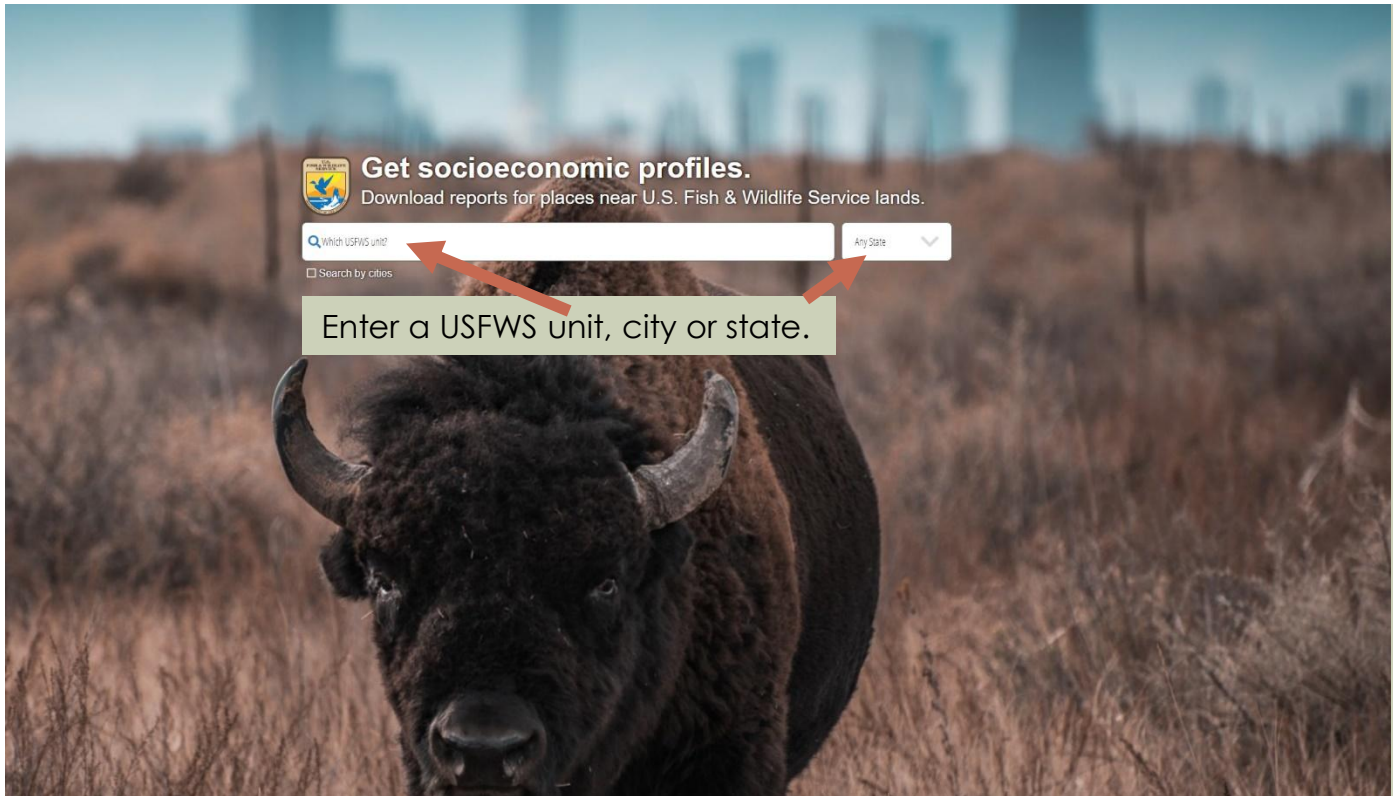
**BLM:** <https://headwaterseconomics.org/tools/blm-profiles/>

**USFWS:** <https://headwaterseconomics.org/tools/usfws-indicators/>

**USDA FS:** <https://headwaterseconomics.org/tools/forest-indicators/>



# Select the unit or area of interest (USFWS site example)



# Choose political boundaries to view



U.S. Fish & Wildlife Service Socioeconomic Profiles

## Okefenokee National Wildlife Refuge

Change location

### 1 View Boundaries

Select political boundaries for analysis.

CENSUS TRACTS

CITIES / TOWNS

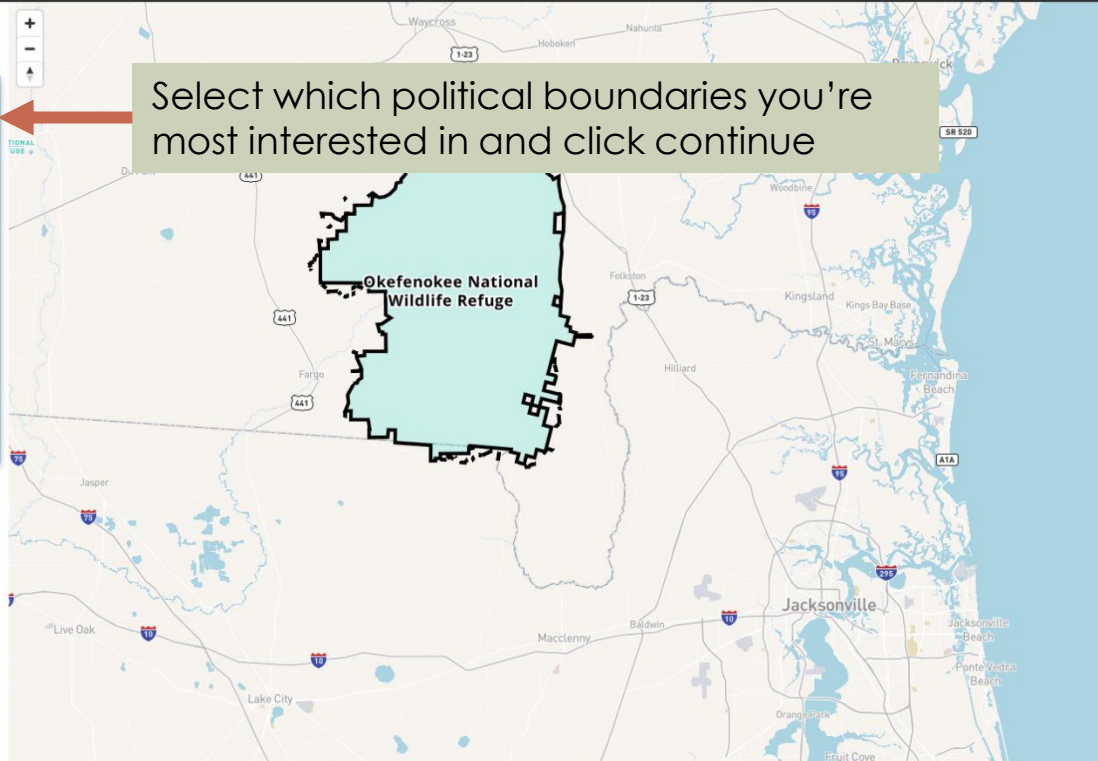
COUNTIES

AMERICAN INDIAN AREAS

STATES

CONTINUE

Select which political boundaries you're most interested in and click continue



# Click on the map to select areas

U.S. Fish & Wildlife Service Socioeconomic Profiles

Okefenokee National Wildlife Refuge

Change location

1 View Boundaries

2 Select Area(s)

Add counties.

☒ CLICK ON MAP

☐ DRAW POLYGON

☐ WITHIN A DISTANCE

START OVER

Choose how you want to select areas.  
Start with 'click on map' for now.

# Select areas for analysis



U.S. Fish & Wildlife Service Socioeconomic Profiles

## Okefenokee National Wildlife Refuge

Change location

1 View Boundaries

2 Select Area(s)

Click on the map to add/remove counties.

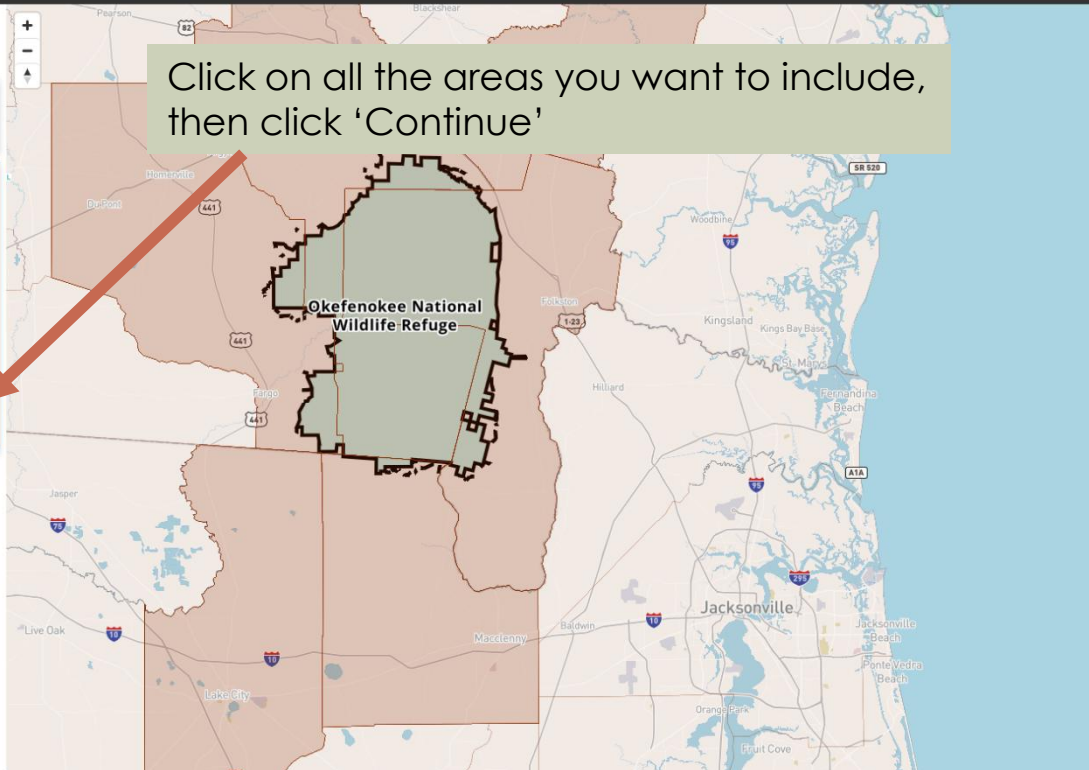
6 Counties selected

Brantley County, GA  
Ware County, GA  
Baker County, FL  
Charlton County, GA  
Clinch County, GA  
Columbia County, FL

← BACK

CONTINUE →

Click on all the areas you want to include, then click 'Continue'



# Explore data and Download report



U.S. Fish & Wildlife Service Socioeconomic Profiles



## Okefenokee National Wildlife Refuge

Change location

1 View Boundaries

2 Select Area(s)

3 Explore Results

☐ Map all counties

**MEDIAN HOUSEHOLD INCOME**

**MINORITIES**

**SPEAK ENGLISH LESS THAN "VERY WELL"**

**FAMILIES BELOW POVERTY LEVEL**

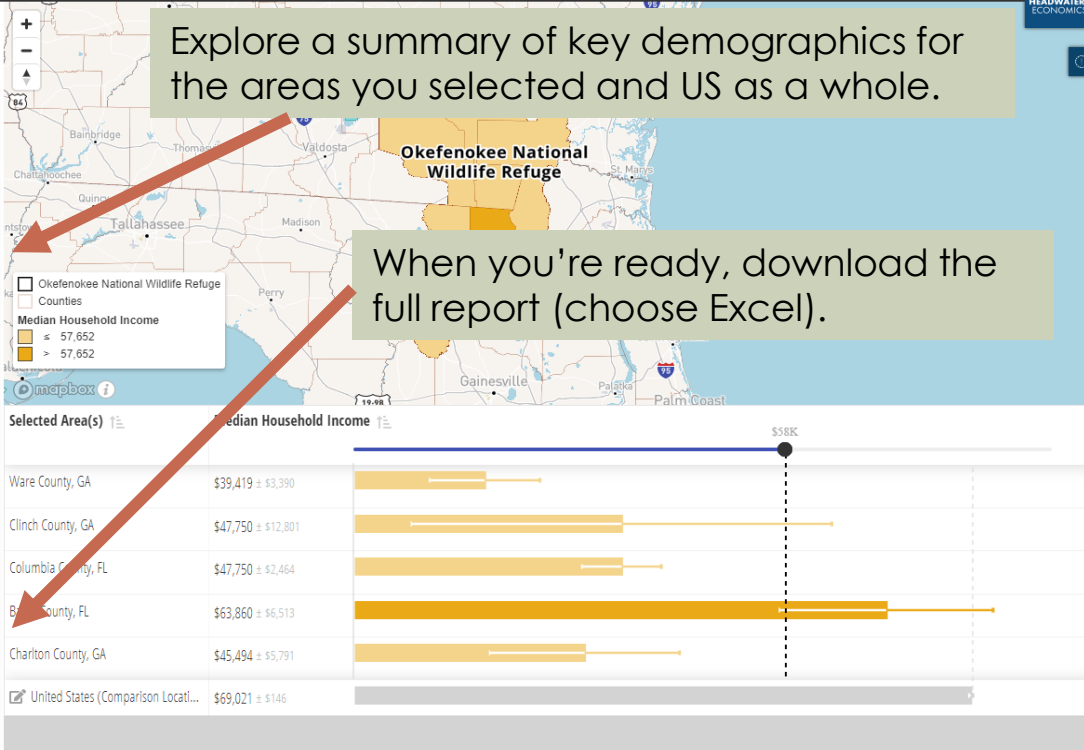
**MEDIAN AGE**

DOWNLOAD FULL REPORT

START OVER

Explore a summary of key demographics for the areas you selected and US as a whole.

When you're ready, download the full report (choose Excel).



# Agency EPS Tool Report (Excel)

Use the Table of Contents Tab to Hyperlink to report sections.

You can also click on the tabs by number.



## U.S. Fish and Wildlife Service Socioeconomic Profile

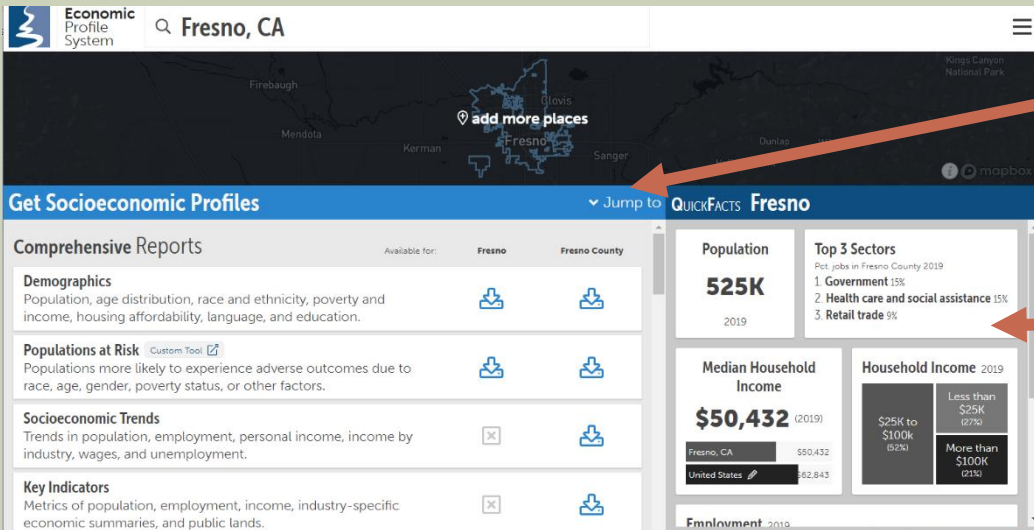
[Cover](#) [About](#) [TOC](#) [1](#) [2](#) [3](#) [4](#) [5](#) [6](#) [7](#) [8](#) [9](#) [10](#) [11](#) [12](#) [13](#) [14](#) [15](#) [Endnotes](#)

# Additional data available through the General EPS Tool portal:

<https://headwaterseconomics.org/tools/economic-profile-system>

## Get socioeconomic profiles

Search by community, county, or state



1. Type a community, indigenous area, county or state to explore

2. Select a Report to Download

Explore Quick Facts about the community

# General EPS Tool Reports

## ■ Comprehensive Reports

- Demographics
- Populations at Risk
- Socioeconomic Trends
- Key Indicators

## ■ Land Management Reports

- Land Use
- Federal Land Payments
- Living Near Public Lands
- BLM, USDS FS and USFWS tools

## ■ Natural Hazards Reports

- Wildfire Risk
- Neighborhoods at Risk

## ■ Industries Reports

- Agriculture
- Government
- Mining, Oil and Gas
- Non-Labor Income
- Services
- Timber
- Tourism

# Dive Deeper



Partnership and Community  
Collaboration Academy

## Explore the Economic Profile System (EPS) Tools

1. Explore socioeconomic data with the EPS Tools using the instructions below. Choose to access the system through the General Data Site, or the agency tools for BLM, USFWS or USDA FS units.
2. Complete the questions included below.
3. Share your takeaway on the [Self-Study Form](#).

**Side note:** The EPS tools noted below, and several others (*Neighborhoods at Risk*, *Wildfire Risk to Communities*, *Library of Trails Benefits*, *Populations at Risk*) can also be accessed through the Tools page on Headwaters Economics website: <https://headwaterseconomics.org/tools/>

### Exploring community data through the General Data Site

1. **Navigate** to the Headwaters Economics EPS tool general site: <https://headwaterseconomics.org/tools/economic-profile-system>
2. **Type in the name** of a community, Indigenous area, county or state to explore and select it from the dropdown list.
3. **Explore the QuickFacts** for your community, and then **Select a Report** to download. (We recommend Demographics and Socioeconomic Trends reports to start.)
4. **Choose** a comparison location: U.S., state, or county.
5. **Download** the Report and select XLS or PDF format. **Continue the exercise on page 3.**

Open the Report you downloaded and answer the following questions:

1. Which geographic units did you choose to look at and why?

2. Using the table of contents (TOC tab) in your report, navigate to sections related to *Population, Wages, and Income*. What do you notice about the data or trends for the areas you selected?

3. Navigate to the section(s) on *Industry*. What sectors are you currently partnering with, if any? Are they growing or declining? Is there a sector you want to partner with?

4. Explore one other section of the report that interests you. What do you observe?

EPS Tool optional homework