

# Case Study Program



**Managing by Network**

Partnership and Community Collaboration Academy

# Sharing your Partnership Story

Speak to a  
success, failure,  
challenge,  
opportunity,  
work-in-progress,  
or vision

relative to your  
work supporting  
partnerships and  
community  
collaboration.

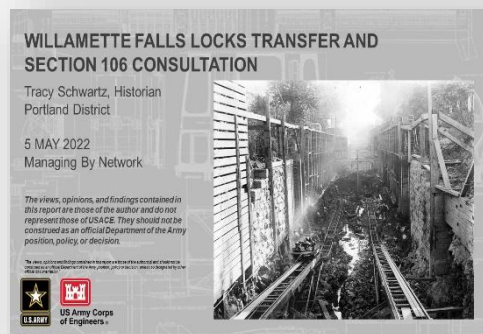
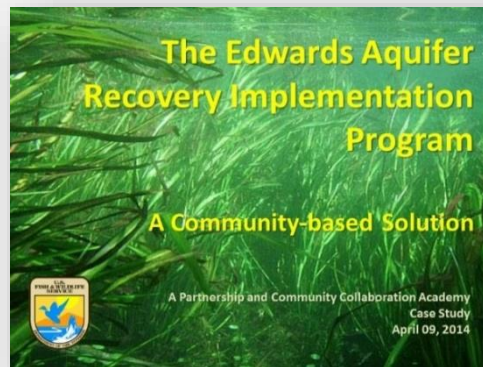
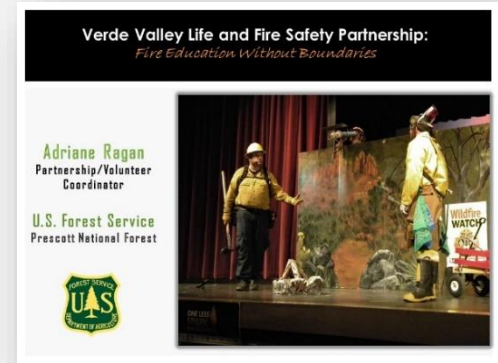
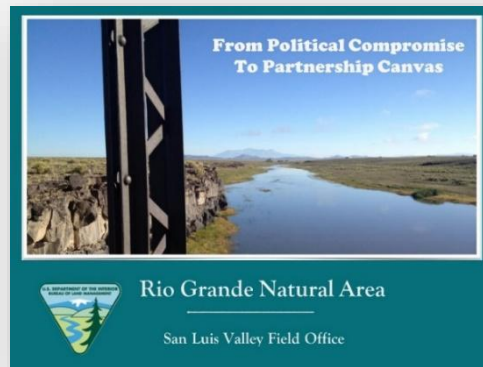


# Opportunity for Leadership and Peer Learning

Participation is **voluntary**. Most participants find value in the process and the experience.

>**200** case studies have been presented to date!

Browse past case study presentations in our Case Study Catalog.



The Academy's Case Study Catalog:

<https://www.partnership-academy.net/resources/case-study/>

# What are the benefits?







“Okay, I want to do a Case Study. What next?”

How do I create a case study?

Where do I sign up?

# Case Study Presentations

---

- Presented by YOU in one of our webinars
- About 20 mins content + 20 mins interaction/Q&A
- PowerPoint, Storymap, Prezi, live tour, or other
- You are welcome to co-present with another participant or partner
- We support your creative process, helping to workshop ideas and prepare for delivery

# From Design to Delivery

When	What
Mar 10 – 21*	Sign up for a presentation date at sessions in May-June
5 weeks out	Send us an outline or summary of what you plan to present
3 - 4 weeks out	Send us your draft presentation or materials. Participate in a prep meeting to share ideas and feedback.
1 week before your session week	Final PPT presentation due

*We're happy to chat about your case study by email, phone and WebEx at any time.*

# When Do We Present?

12 spots available in May & June

Present in one webinar

Sign up for any webinar group and date

	<i><b>Alpha</b></i>	<i><b>Beta</b></i>	<i><b>Gamma</b></i>	<i><b>Delta</b></i>
<b>Session 14</b>	May 14	May 14	May 15	May 15
<b>Session 16</b>	May 28	May 28	May 29	May 29
<b>Session 18</b>	June 11	June 11	June 12	June 12



# How do I sign up?

- Sign up form is open  
Mar 10 - 21
- Tell us your 1st and 2nd preferred dates, and the topic of your presentation.
- Follow up email will confirm your presentation date or placement on the Wait List.

## Managing by Network 2025: Case Study Sign-up

Please provide your first and second choice for presentation dates.

As presenters are confirmed, dates will be removed from the options below.

Name \*

2025 Case Study Session - First Choice \*

- ☐ Session 14 Alpha (May 14, 11AM ET)
- ☐ Session 14 Beta (May 14, 2PM ET)
- ☐ Session 14 Gamma (May 15, 11 AM ET)
- ☐ Session 14 Delta (May 15, 2PM ET)
- ☐ Session 16 Alpha (May 28, 11AM ET)
- ☐ Session 16 Beta (May 28, 2PM ET)
- ☐ Session 16 Gamma (May 29, 11 AM ET)
- ☐ Session 16 Delta (May 29, 2PM ET)
- ☐ Session 18: Alpha (June 11, 11 AM ET)
- ☐ Session 18: Beta (June 11, 2 PM ET)
- ☐ Session 18: Gamma (June 12, 11 AM ET)
- ☐ Session 18: Delta (June 12, 2 PM ET)
- ☐ Join the Wait List

What is the topic of your case study? \*

Submit



Raise your hand if you're interested?

For more, see the Case Study Checklist or contact us.