



# Western Regional Partnership

*Reliable Outcomes for America's Defense, Energy,  
Environment, and Infrastructure in the West*

*[www.wrpinfo.org](http://www.wrpinfo.org)*

**Deb Smith Ormsbee**

Strategic Support

NAVAIR / Department of the Navy / Department of Defense

Existing slides developed by WRP; Amy Duffy



# Key Messages

2

- ❑ **Share more information about the WRP**
  - ❑ History
  - ❑ Purpose
  - ❑ Current Efforts
- ❑ **Discuss the scope of WRP**
  - ❑ Large-scale geographic region
  - ❑ Senior – policy level leadership and field level involvement
- ❑ **Discuss the focus of WRP**
  - ❑ Reliable outcomes
  - ❑ Leveraging existing programs with partners
- ❑ **Reflect on MbN learning as applied to working with the WRP**

## Pre-WRP Principals' Meetings

- Internal DoD Meetings
- Udall Institute Survey and MCI West Study

## November 2007

- 1st Principals' Meeting
- WRP concept was outlined and explored further through 6 committees

## August 2010

- Adopted WRP Charter
- Adopted WRP Vision and Mission
- Adopted Recommendation to establish Steering Committee (SC) and Tribal Relations Committee

## September 2012

- Well attended (117); Senior-level participants
- Many deliverables

**WRP  
Time-  
line  
Through  
2014**

**2007**

**2009**

**2010**

**2011**

**2012**

**2014**

## March/April 2009

- Recommended committees continue their efforts
- Established Interim Steering Committee (ISC)

## September 2011

- Restructured 7 committees and 3 subcommittees to 4 committees to better align committee structure to WRP Mission

## June 2014

- Revised WRP Vision Statement, WRP Mission/Vision document, WRP Charter and WRP committee restructure
- Held 5 Plenary Sessions
- Continued to have strong attendance
- 8 reports with recommendations and collaborated on 2 landscape-level projects

# WRP Vision and Mission

4



## WRP Vision

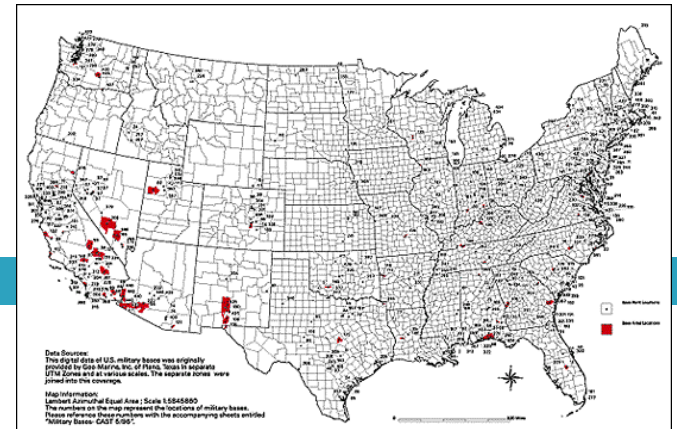
WRP will be a significant resource to proactively identify and address common goals and emerging issues and to develop solutions that support WRP Partners

## WRP Mission

WRP provides a **proactive and collaborative framework for senior-policy level Federal, State and Tribal leadership** to identify **common goals and emerging issues** in the states of Arizona, California, Colorado, Nevada, New Mexico, and Utah and to **develop solutions that support WRP Partners and protect natural resources, while promoting sustainability, homeland security, and military readiness**

# WRP Region's Uniqueness

5



## □ Importance to the Military

- Extensive Training Ranges, Premier Testing Facilities, Unmatched Military Air Space
  - **Army:** ~55% of the Army's landholdings
  - **Navy:** Over 33% of Navy's landholdings
  - **Marine Corps:** 85% of Marine Corps' airspace;  
67% of Marine Corps' Live Fire Ranges
  - **Air Force:** Includes four of the largest USAF range complexes – Edwards, Nellis/Creech/NTTR; Luke/Goldwater; and UTTR
  - 75% of DoD Special Use Airspace is located within the WRP Region

## □ Significant State Trust Landholdings

## □ Approximately 172 Federally recognized Tribes

## □ Significant amounts of Federally managed land

- In WRP states the amount of Federal land ranges from 34.1% - 84.9% of total state land

State	% of Federal Public Land (not including DoD managed lands)	% of DoD Managed Land	% of Indian Trust Land	Private Land	State Trust Land	State Size in square miles and ranking by area
Arizona	35.5%	6.6%	27.6%	17.5%	12.7%	114,000 6 <sup>th</sup> largest state
California	40.2%	4.0%	.5%	50.3%	2.5%	160,000 3 <sup>rd</sup> largest state
Colorado	38.9%	0.7%	1.1%	54.9%	4.4%	104,100 8 <sup>th</sup> largest state
Nevada	78.8%	6.1%	1.42%	13.03%	.15%	110,561 7 <sup>th</sup> largest state
New Mexico	29.7%	4.4%	10.2%	43.9%	11.6%	121, 593 5 <sup>th</sup> largest state
Utah	63.6%	3.4%	4.5%	21%	7.5%	84,904 13 <sup>th</sup> largest state

**These six states are home to 18% of the U.S. population and constitute 19% of the total land mass**

# WRP Structure

7

## WRP Co-Chairs:



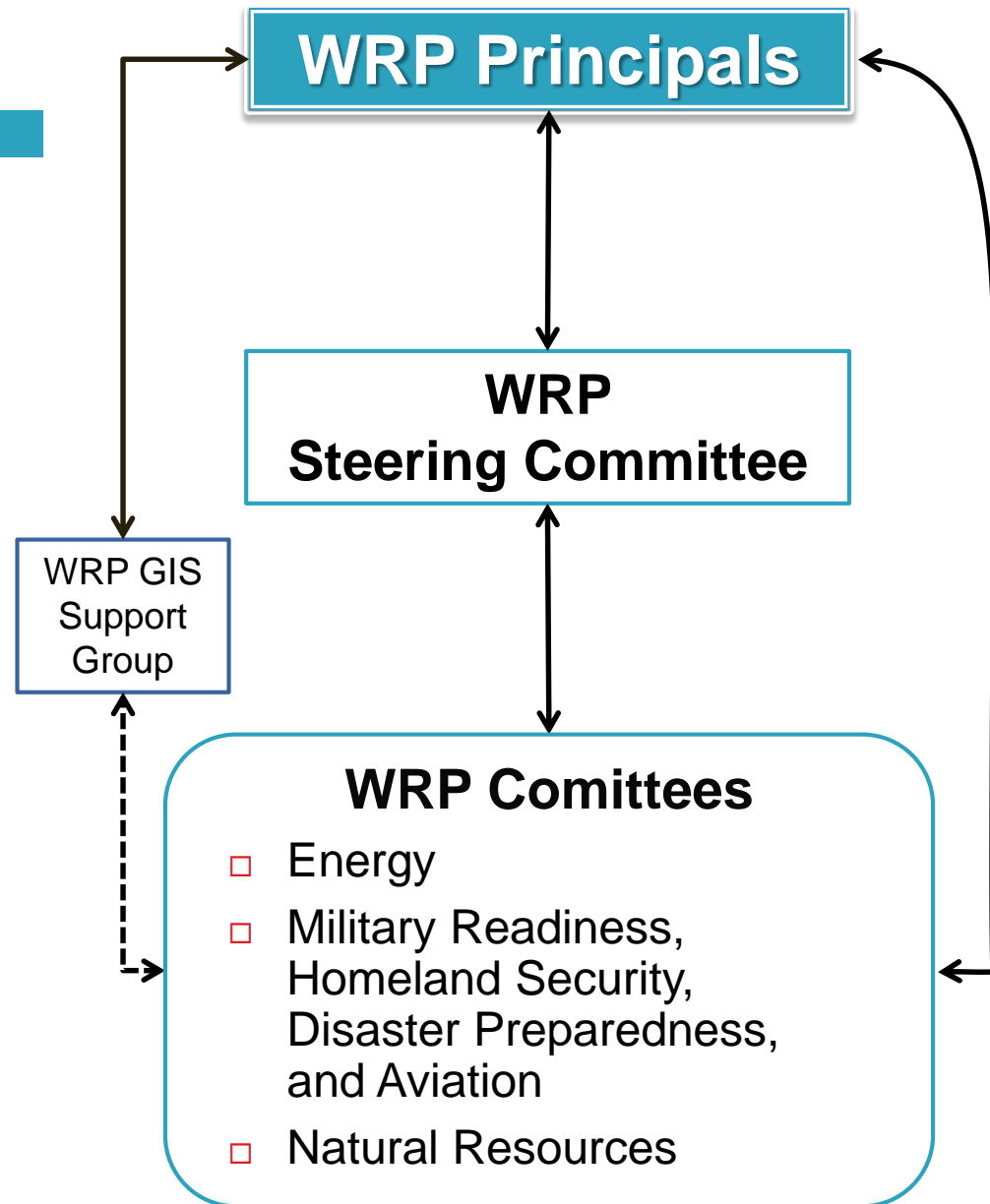
**Honorable Gary Herbert**  
Governor of Utah



**Ms. Janice Schneider**  
Assistant Secretary,  
Land and Minerals  
Management, DOI



**Mr. Dave Duma**  
Principal Deputy Director,  
Operational Test &  
Evaluation, DoD





# WRP Steering Committee

8



- **Representatives from each of the six states**
  - Arizona, California, Colorado, Nevada, New Mexico, and Utah
- **Bureau of Indian Affairs**
- **Bureau of Land Management**
- **Bureau of Reclamation**
- **Customs and Border Protection, U.S. Border Patrol**
- **Federal Aviation Administration**
- **Federal Emergency Management Agency**
- **Federal Highway Administration**
- **National Park Service**
- **Natural Resources Conservation Service**
- **National Oceanic and Atmospheric Administration**

- **Office of Secretary of Defense**
- **U.S. Air Force Headquarters**
- **U.S. Army**
- **U.S. Army Corps of Engineers**
- **U.S. Department of Energy**
- **U.S. Environmental Protection Agency**
- **U.S. Fish and Wildlife Service**
- **U.S. Forest Service**
- **U. S. Geological Survey**
- **U.S. Marine Corps Installations West**
- **U.S. Navy**
- **Native American Leadership:**
  - Navajo Nation, Inter-Tribal Council of CA, Inc.
- **Western Governors Association Liaison**



# WRP Goals (per WRP Charter)

9

- ❑ Serve as a catalyst for improved regional coordination among State, Federal, and Tribal agencies
- ❑ Address common goals, identify and solve potential conflicts, and develop solutions that protect our natural resources, while promoting sustainability and mission effectiveness
- ❑ Provide a forum for information exchange, issue identification, problem solving, and recommendations across the WRP region
- ❑ At annual Principals' meeting, adopt strategic priorities to complete in the subsequent year
- ❑ Leverage existing resources and linking of efforts to better support key projects
- ❑ Provide a GIS Sustainability Decision Support Tool that integrates appropriate Federal, Tribal, State and other available data sources for use in regional planning by WRP partners

# 2014-2015 WRP Results

10

- ❑ **Collaborated on broad-based regional planning in Southeastern Arizona/New Mexico and WRP Mojave Ecoregion**
  - ❑ Fort Huachuca won REPI 2014 Challenge and area designated a Sentinel Landscape
- ❑ **Delivered 10 reports and 2 fact sheets:**
  - ❑ 2015 WRP airspace sustainability overview and accompanying MET Tower Fact
  - ❑ 2015 WRP state support for military testing and training
  - ❑ 2015 WRP Guide to Working with DoD
  - ❑ WRP Intro to Federal Partners
  - ❑ 2015 WRP renewable energy development on Tribal Lands
  - ❑ 2015 WRP Energy Guide
  - ❑ Brief Overview of water-related resources available to WRP partners
  - ❑ WRP partner input on species of concern
  - ❑ 2014-2015 WRP Energy Committee Webinar Series (highlighting key entities efforts and identify opportunities for multi-agency coordination)
  - ❑ Renewable energy and transmission siting coordination and potential impacts to the military mission
- ❑ **Updated Military Asset Listing Summaries; WRP Outreach**

# WRP SoAZ/NM Project Background and Update



11

## □ GIS Suitability Analysis and Outreach

- ▣ Identify areas important to both ecological and military values
- ▣ Initial study area of 13,100 square miles refined to three identified focus areas, consisting of 1,335 square miles

## □ As a direct result of this project's efforts the area:

- ▣ Received funding from Arizona Military Installation Fund for conservation easement/deed restriction for 1,208 acres within WRP SoAZ/NM Project priority Focus Area 1 (Two rounds of funding; leveraged efforts)
- ▣ Heightened awareness of region's importance for natural resources and military operations
- ▣ Won the 2014 and 2015 REPI Challenge (over \$7.6 million) and received \$5.9 million in Regional Conservation Partnership Program (RCPP) funding
  - ALWT, in partnership with Fort Huachuca, submitted proposal
  - Over \$15 million in partnership funding with the focus of restricting development on 3,500 acres, thereby supporting the military mission, preventing degradation of water resources, and supporting critical/proposed habitat supporting endangered species
- ▣ Fort Huachuca was designated a Sentinel Landscape; March 2016 meeting held

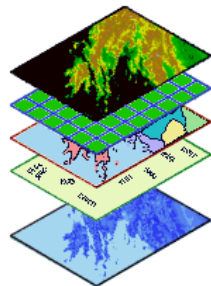
**WRP provided Support Letter for ALWT's REPI 2016 Submission and RCPP funding**

# WRP 2015-2016 Efforts

12



**WRP  
Regional  
Strengths,  
Areas of  
Commonality,  
and  
Emerging  
Issues**



## Energy Committee:

- Highlight new energy generation and transmission planning efforts and projects in WRP region and
- Potential impacts on WRP Partners' missions

## MRHSDP&A Committee:

- Highlight DoD mission in WRP region and identify issues with potential impacts to WRP Partners' missions
- Any changes to airspace use in the WRP region that may impact WRP Partners

## Natural Resources

- Identify associated range and distribution for high priority species at risk within WRP Region
- Concerns about region's water sustainability

## GIS Support Group

- Provide the necessary GIS analysis, mapping and data support

# WRP Web Mapping Application

13

- ❑ Query and download spatial data
- ❑ Export maps
- ❑ Search data from over 50 sources
- ❑ Consumable mapping services
- ❑ Secured/sensitive data access

## Military Asset Tool



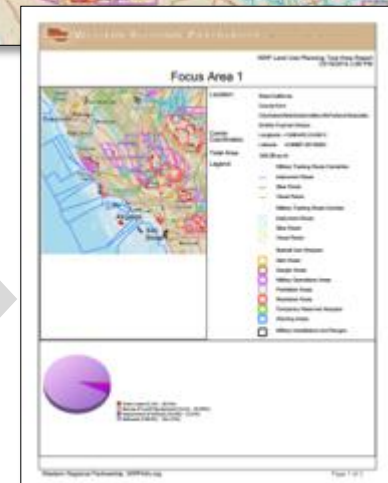
## Regional Project Database

- ❑ Input project location and information
- ❑ Identify needs
- ❑ Search for projects
- ❑ Reduce redundancies



## Land Use Planning Tool

- ❑ Spatial data
- ❑ Critical habitat
- ❑ Regional project database
- ❑ Energy point of contact database
- ❑ Generate reports





# **WRP 2015-2016**

## **Committee Webinars**

14

- Attendance was high**
- Good opportunities to focus one-hour to a dedicated subject**
- Efficient way to explore subject areas of interest to WRP Partners**
- Eight held and two scheduled for August**

# Value of WRP

15

- ❑ **Strong Leadership**
- ❑ **Opportunity to engage with States, Federal, and Tribal entities across WRP region**
  - ▣ Regional coordination opportunities: Transmission, military operations, wildlife, and Tribal issues do not follow state boundaries
  - ▣ Relationships: knowing who to call and having them recognize who you are before the crisis
- ❑ **Enhancing situational awareness of policy and emerging issues**
  - ▣ Solving problems/creating solutions
  - ▣ IIP (Information Is Power): knowing what is being planned by whom allows early strategizing of an appropriate response
- ❑ **Access to tools and WRP Deliverables**
  - ▣ WRP Web Mapping Application, Regional Project Database, Airspace Sustainability Guide, WRP State Support for Military Testing and Training, WRP Mojave Project, WRP Southeastern Arizona New Mexico Project, etc., Webinars
- ❑ **Identifying Opportunities**
  - ▣ Understanding where interests overlap can lead to project solutions
  - ▣ Leveraging resources
- ❑ **GIS Working Agreements to improve coordination and collaboration**
  - ▣ WRP has five GIS working Agreements (with the Geoscience Information Network (GIN) and the wildlife agencies of the States of California, New Mexico, Nevada and Utah)



# Looking Back: Lessons Learned (So Far)

16

- ❑ **Equal voices around the table;  
trust to continue early and open conversations**
- ❑ **Consistent support - Amy Duffy supporting  
WRP since it began**
- ❑ **Evolve and adapt; document changes**
- ❑ **Communicate; involve; collaborate**

# Looking Ahead

17

## Western Regional Partnership

Reliable Outcomes for America's  
Defense, Energy, Environment and  
Infrastructure in the West



[www.wrpinfo.org](http://www.wrpinfo.org)

- **(Short term):**  
**Eighth Annual WRP Principals Meeting**
- **(Long term):**  
**Partners continue to assess how WRP**
  - Helps their organizations accomplish their respective missions
  - Helps their people accomplish their “day jobs” more effectively

