

MISSION: ICONIC REEFS



**NOAA
FISHERIES**

Jennifer Moore
Protected Coral Recovery Coordinator



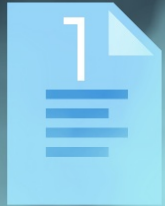
**FLORIDA KEYS
NATIONAL MARINE SANCTUARY**

Earthstar

BIRTHPLACE OF RESTORATION



MISSION: ICONIC REEFS



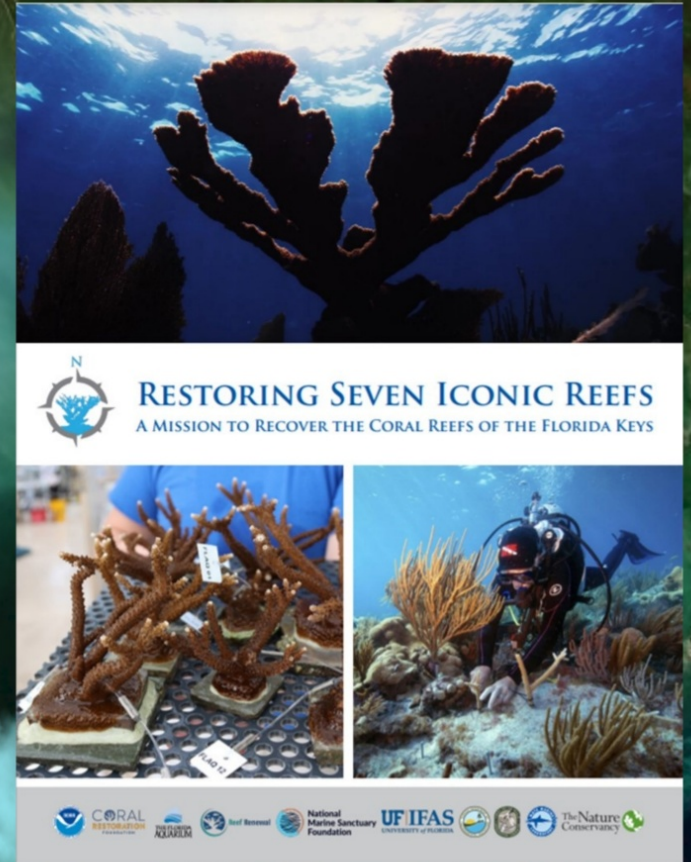
COMPREHENSIVE
PLAN



PHASES



REEFS



MISSION: ICONIC REEFS

PHASE 1A*
5-7 Yrs | 10% Coral Cover



Quickly
restoring reef
structure with
rapidly growing
corals



PHASE 2*
10 Yrs | 25% Coral Cover



Additional
outplanting

Resilient &
Regenerative
reef in result



START OF MISSION
2% Coral Cover



Balances the
reef with
additional coral
species
diversity



PHASE 1B*
5-7 Yrs | 15% Coral Cover

* Timeline dependent on full resourcing

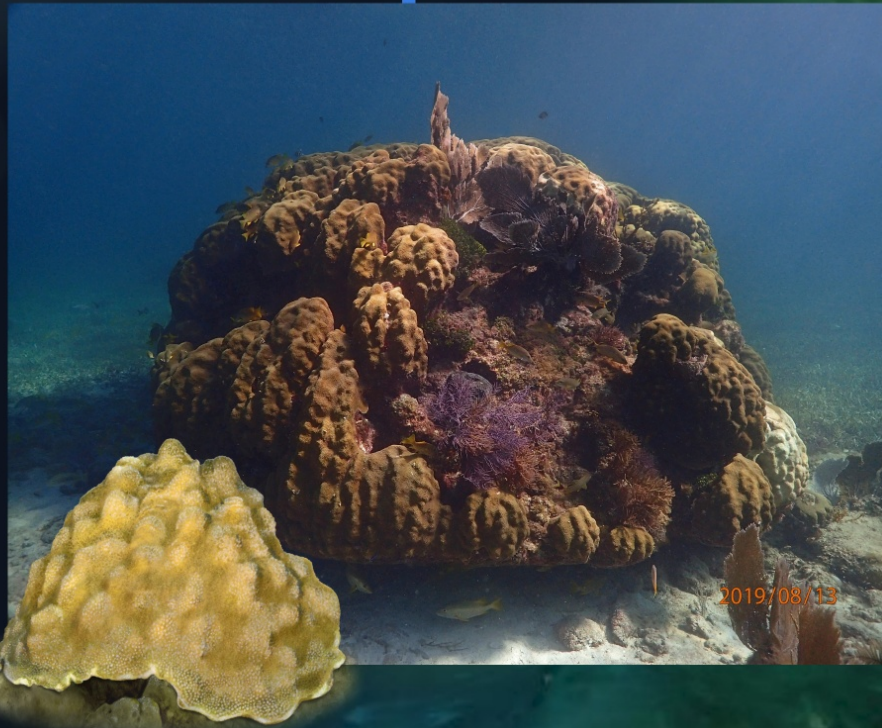
PHASE 1A*

5-7 Yrs | 10% Coral Cover



Quickly
restoring reef
structure with
rapidly growing
corals





Balances the
reef with
additional coral
species
diversity



PHASE 1B*
5-7 Yrs | 15% Coral Cover

PHASE 2 *

10 Yrs | 25% Coral Cover



Additional
outplanting

Resilient &
Regenerative
reef in result

MISSION: ICONIC REEFS

Phase 1
ACTION: Add rapid-growing corals
DURATION: 5-7 Years of Work
10-YR GOAL: ~15% cover

Region	Reef	Total
Upper Keys	Carysfort Reef	\$45,803,168
	Horseshoe Reef	\$5,781,215
Middle Keys	Cheeca Rocks	\$5,050,929
	Sombrero Reef	\$4,989,497
Lower Keys	Looe Key Reef	\$19,976,449
	Newfound Harbor	\$2,453,280
	Eastern Dry Rocks	\$13,214,134
Subtotal		\$97,268,672



Phase 1 Cost Estimate

RESTORING SEVEN ICONIC REEFS: A MISSION TO RECOVER THE CORAL REEFS OF THE FLORIDA KEYS



SUMMARY

CARYSFORT REEF	NEWFOUND HARBOR
HORSESHOE REEF	LOOE KEY REEF
CHEECA ROCKS	EASTERN DRY ROCKS
SOMBRERO REEF	

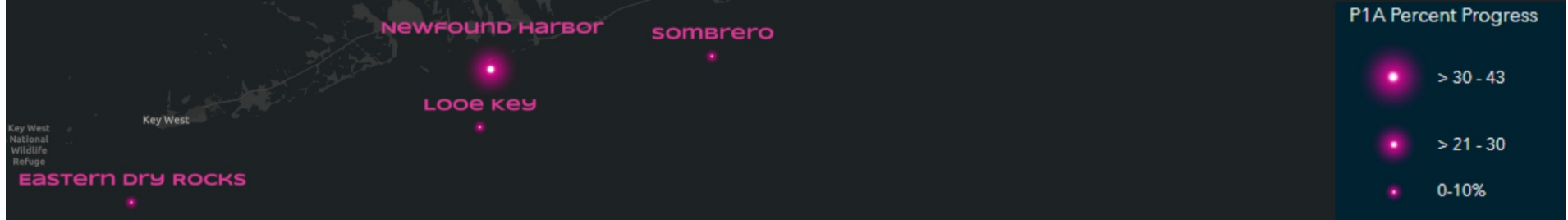
RESTORATION PROGRESSION

Phase 1A PROGRESS

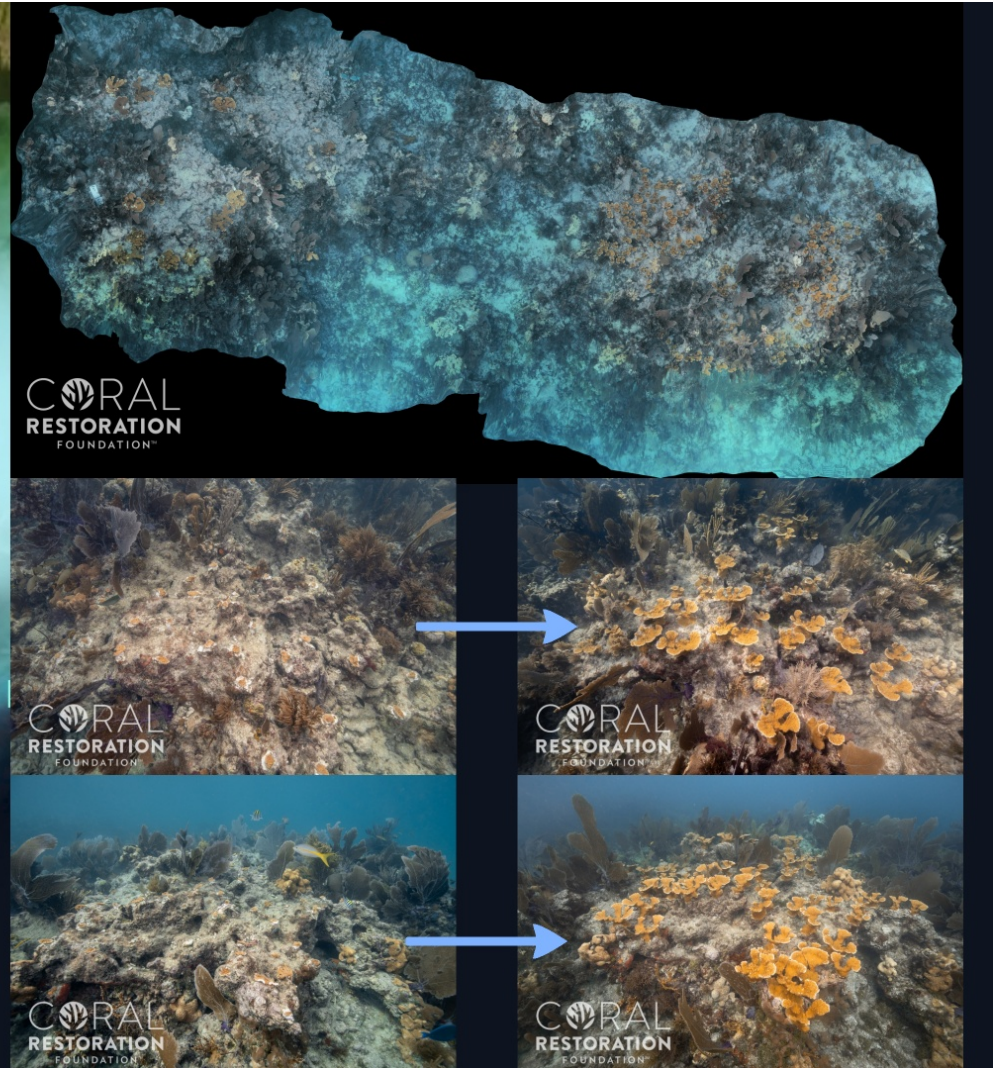
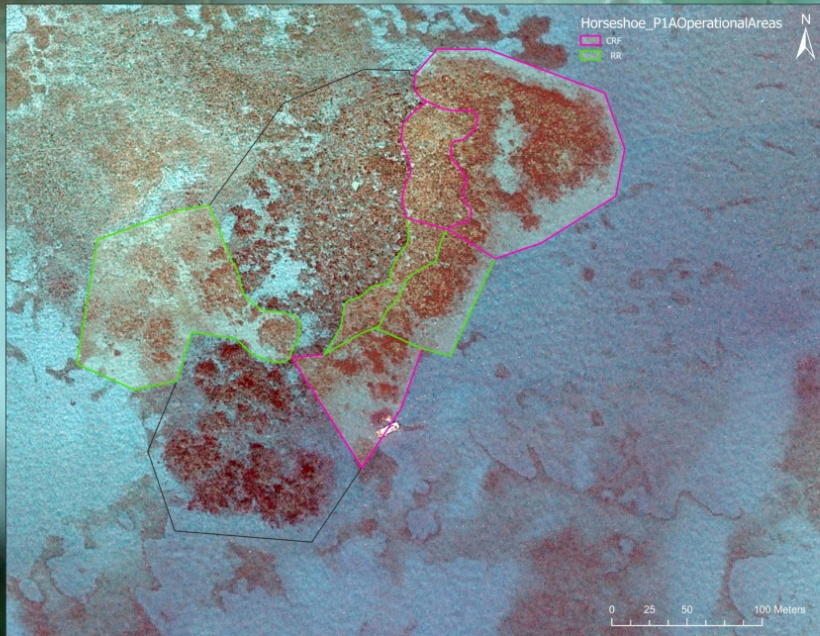
- 13% Completed
- 26% Resourced
- 15.1k Total P1A Outplants
- 9.9k Staghorn Outplants
- 5.2k Elkhorn Outplants

OVERALL PROGRESS

- 34/148 segments with active restoration
- 23% of segments are operational



HORSESHOE



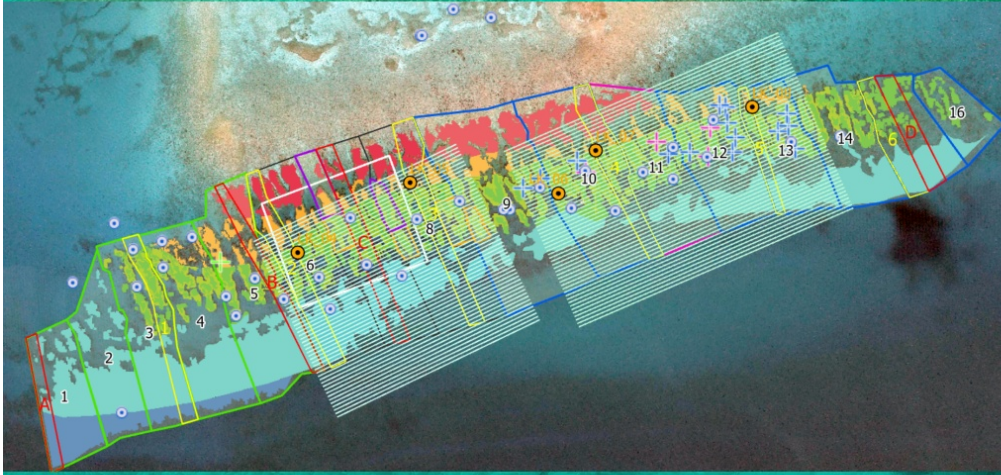


LOOE KEY REEF



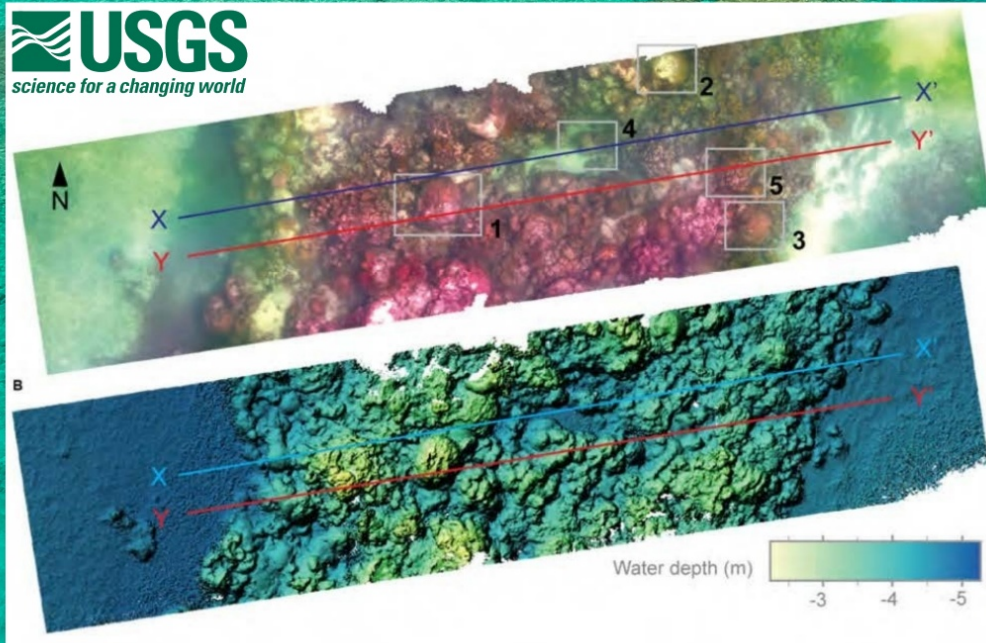
MONITORING

DETAILED SITE IMAGERY



MONITORING

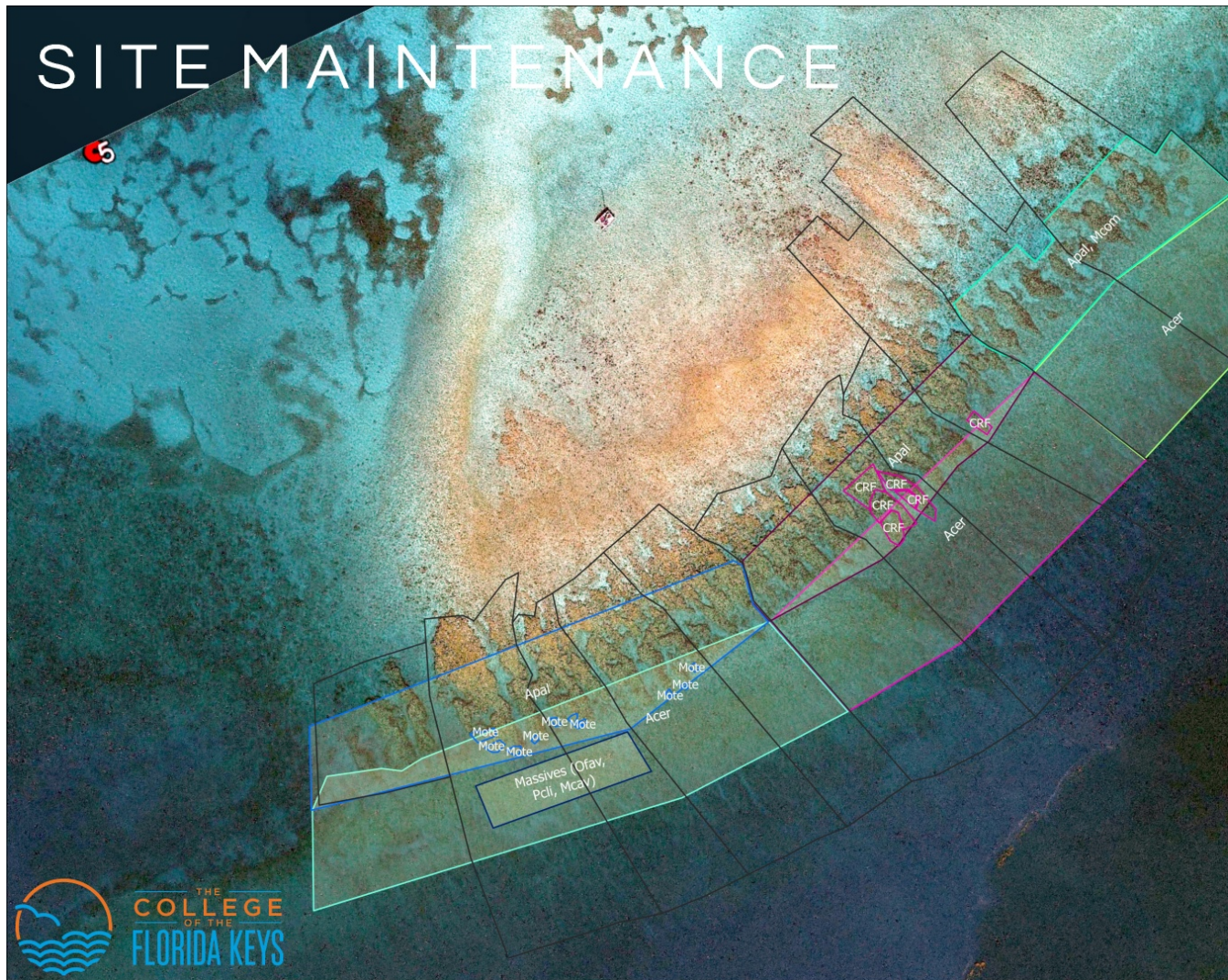
DETAILED SITE IMAGERY



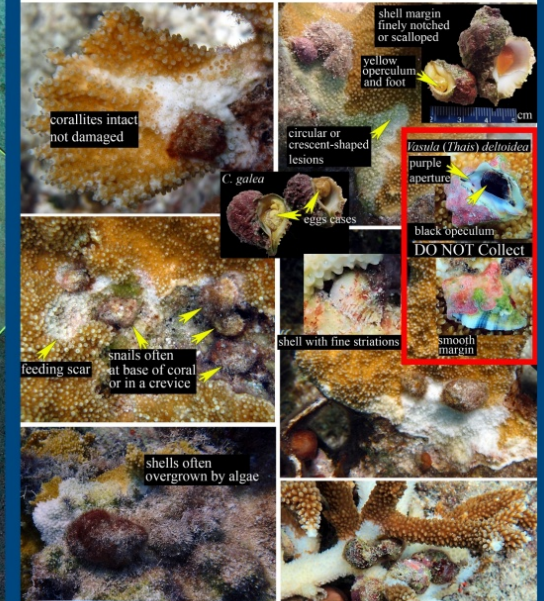
BEYOND CORALS

Eastern Dry Rocks

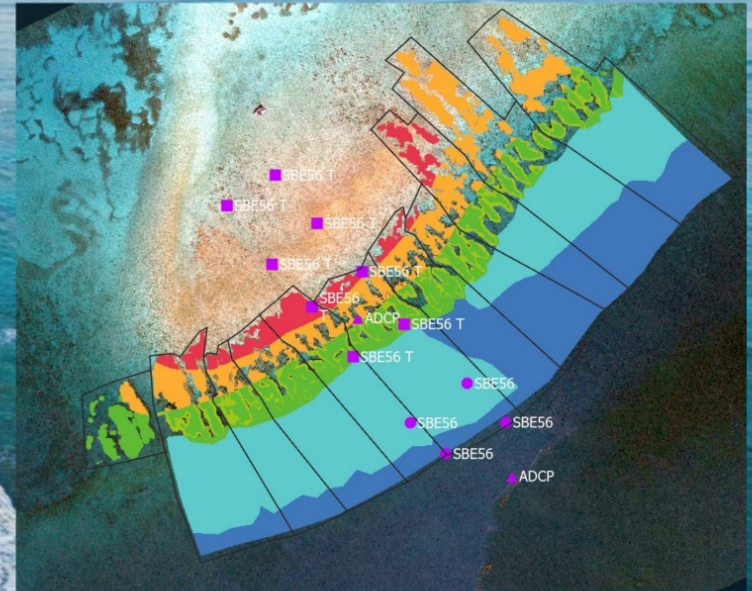
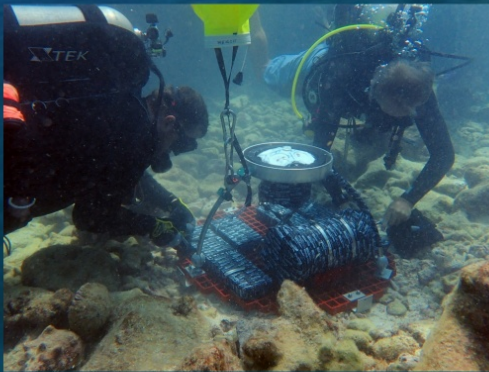
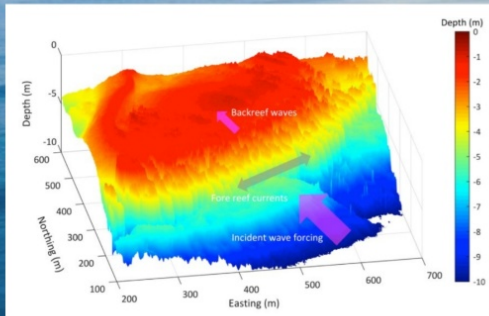




Snail Predation (*Coralliophila galea*)



WAVE ATTENUATION



STEWARDSHIP

**Mission: Iconic Reefs
Coral Restoration Program**

Recreational Diver Training

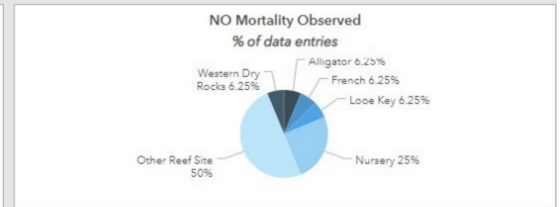
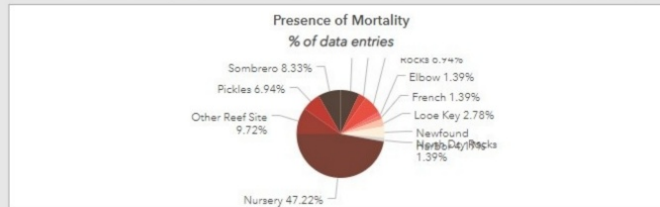
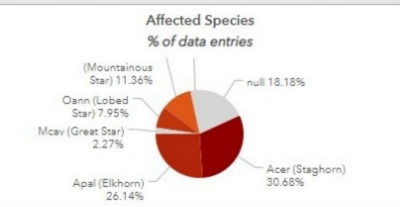
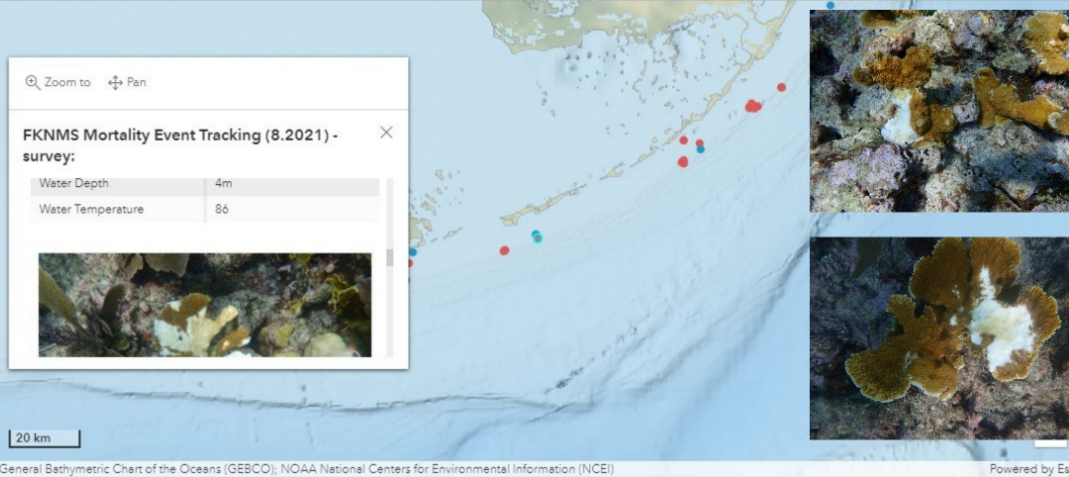
**Florida Keys National Marine Sanctuary
and the Blue Star Restoration Program**



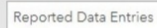
FKNMS Mortality Event Tracking
DASHBOARD BEST VIEWED ON A LARGE MONITOR SCREEN

Filter Data by Observer
select here

American Shoal	September 3, 2021 – Yes	<ul style="list-style-type: none"> Nursery
FWCOffshoreNursery	September 2, 2021 – Yes	<ul style="list-style-type: none"> Nursery
CRFTavernierNursery	September 1, 2021 – Yes	<ul style="list-style-type: none"> North Dry Rocks
	September 1, 2021 – Yes	<ul style="list-style-type: none"> Nursery
CRFTavernierNursery	September 1, 2021 – Yes	<ul style="list-style-type: none"> Nursery
CRFTavernierNursery	September 1, 2021 – Yes	<ul style="list-style-type: none"> Nursery
CRFTavernierNursery	September 1, 2021 – Yes	<ul style="list-style-type: none"> Nursery

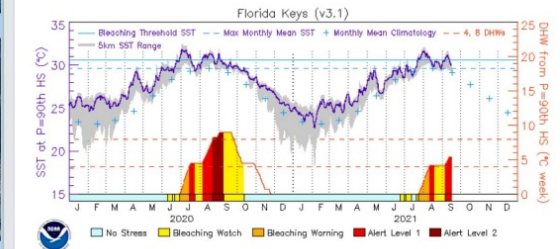


September 5, 2021	<ul style="list-style-type: none"> Looe Key Acer (Staghorn)
August 24, 2021	<ul style="list-style-type: none"> Other Reef Site Munson

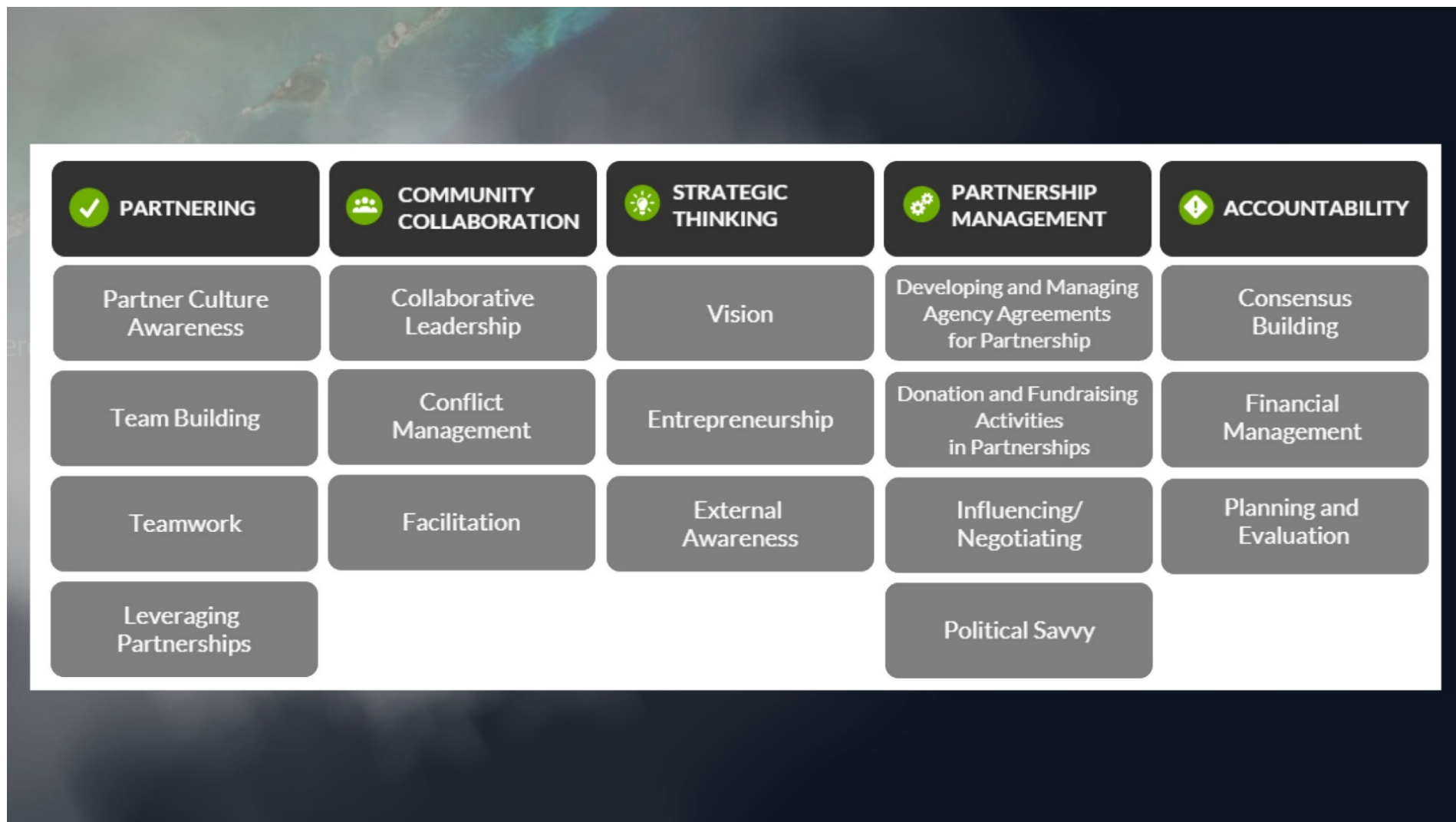


88

1 entry per Site/Nursery, Spp, & Date









✓ PARTNERING	COMMUNITY COLLABORATION	STRATEGIC THINKING	PARTNERSHIP MANAGEMENT	ACCOUNTABILITY
Partner Culture Awareness	Collaborative Leadership	Vision	Developing and Managing Agency Agreements for Partnership	Consensus Building
Team Building	Conflict Management	Entrepreneurship	Donation and Fundraising Activities in Partnerships	Financial Management
Teamwork	Facilitation	External Awareness	Influencing/ Negotiating	Planning and Evaluation
Leveraging Partnerships			Political Savvy	





PARTNERING



COMMUNITY COLLABORATION



STRATEGIC THINKING



PARTNERSHIP MANAGEMENT



ACCOUNTABILITY

Partner Culture
Awareness

Collaborative
Leadership

Vision

Developing and Managing
Agency Agreements
for Partnership

Consensus
Building

Team Building

Conflict
Management

Entrepreneurship

Donation and Fundraising
Activities
in Partnerships

Financial
Management

Teamwork

Facilitation

External
Awareness

Influencing/
Negotiating

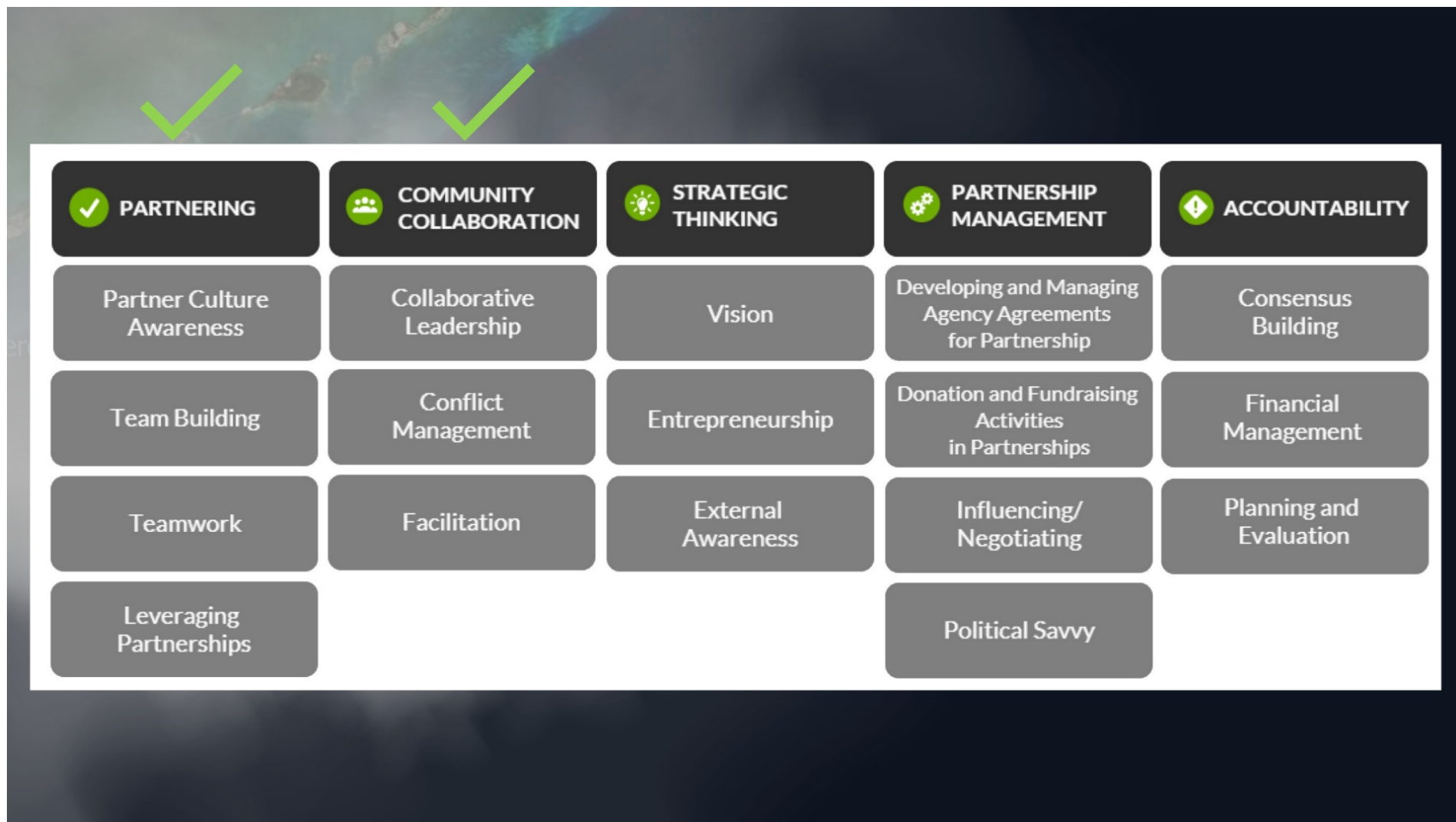
Planning and
Evaluation

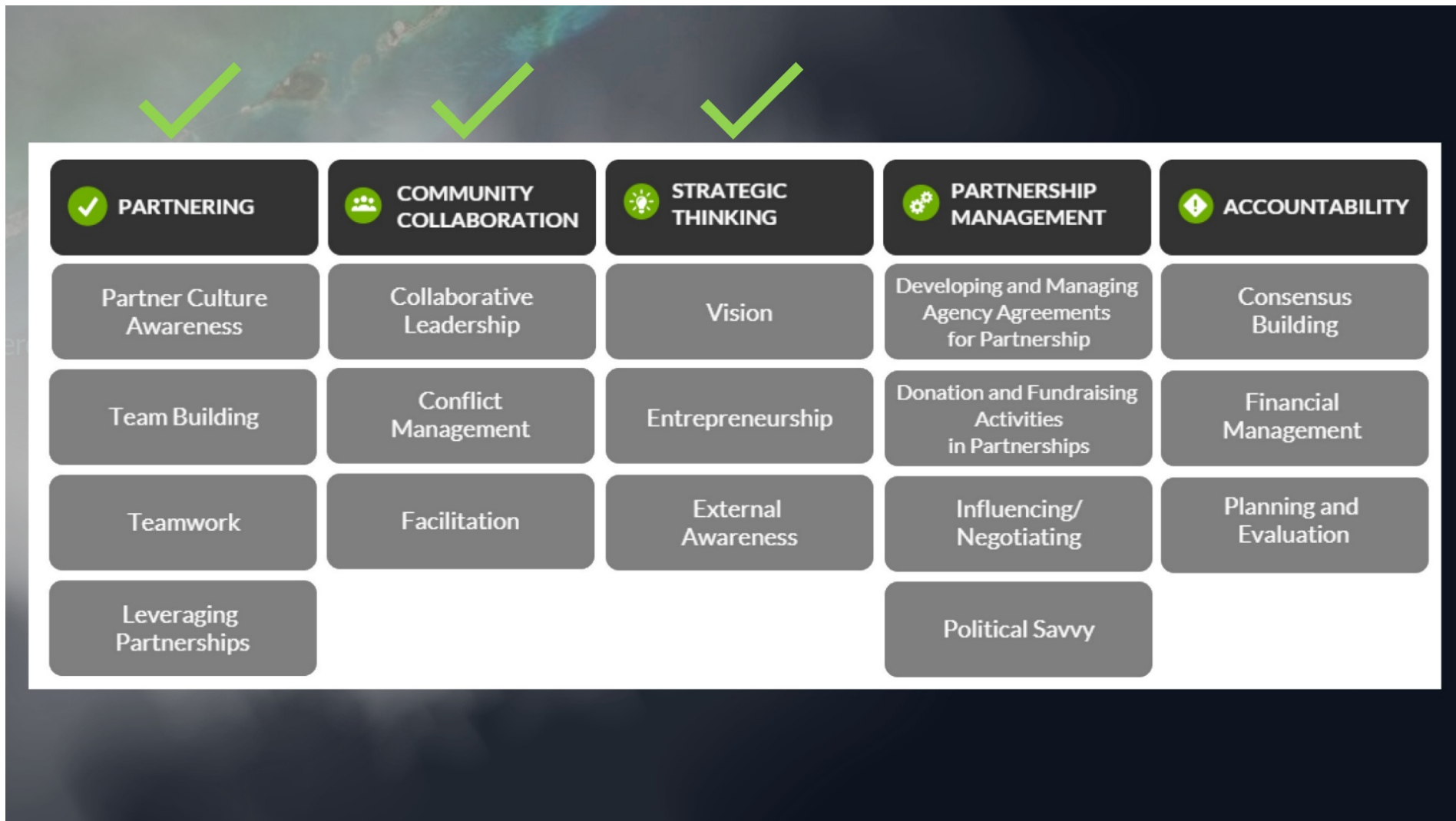
Leveraging
Partnerships

Political Savvy

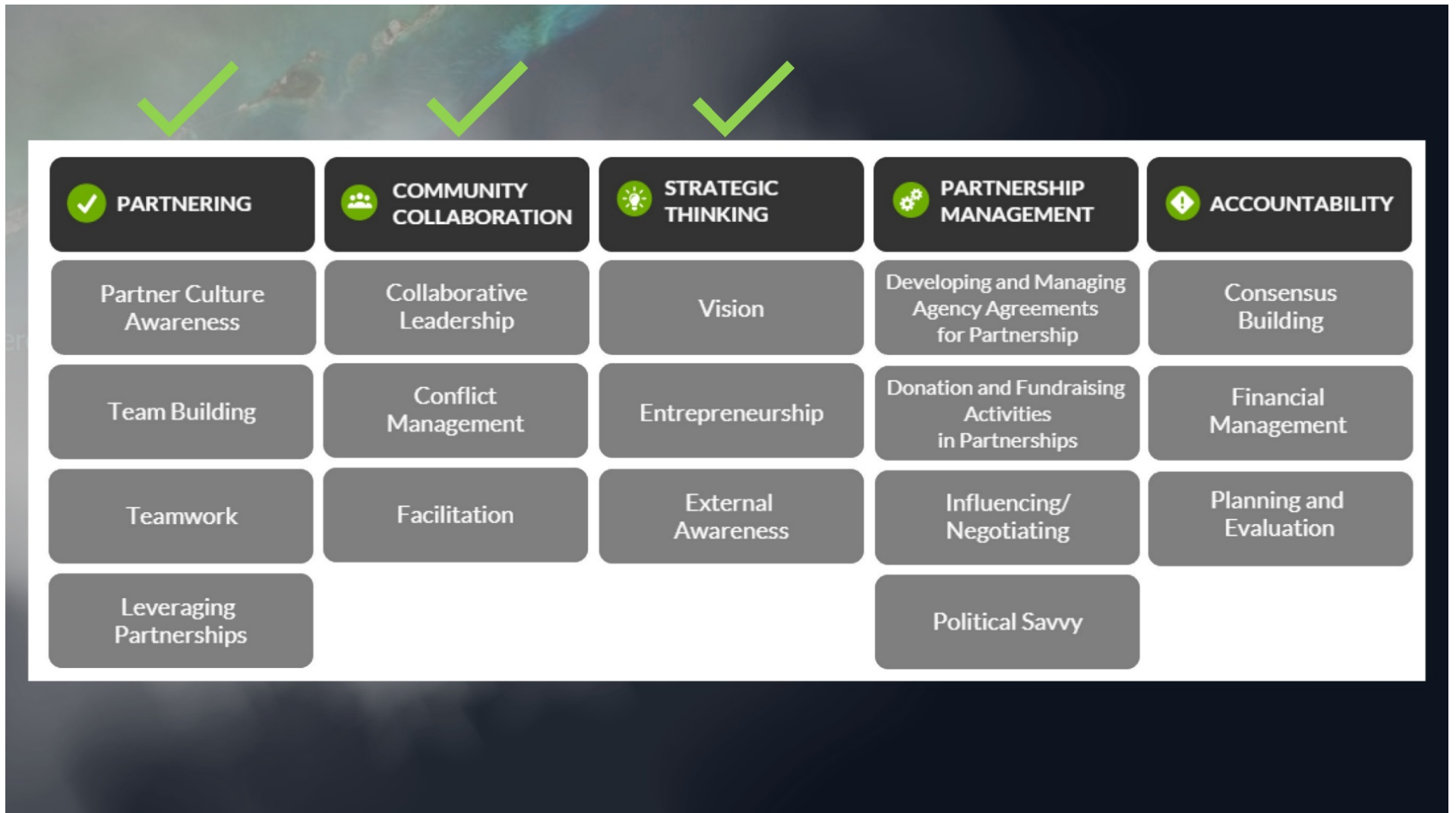




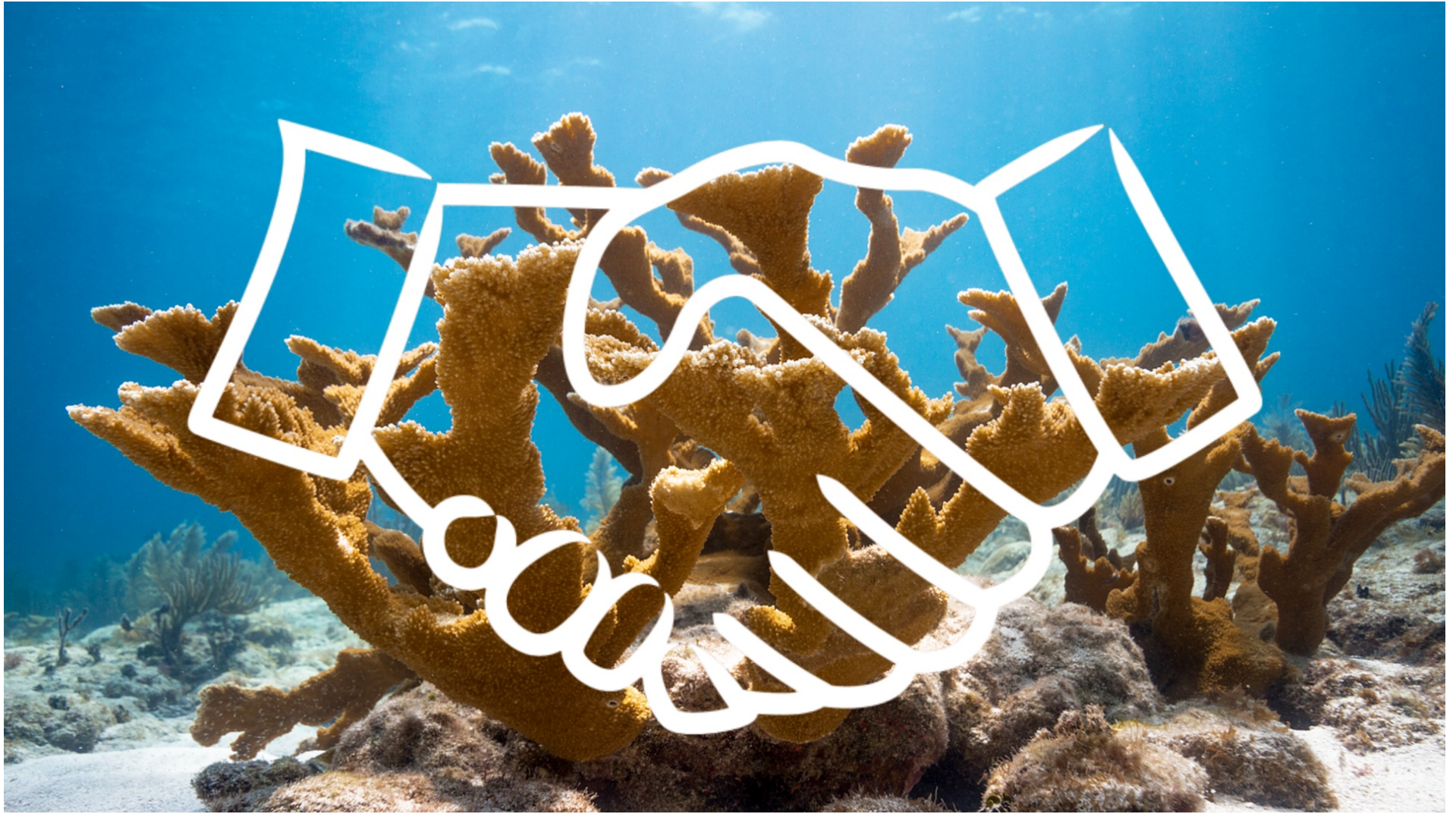




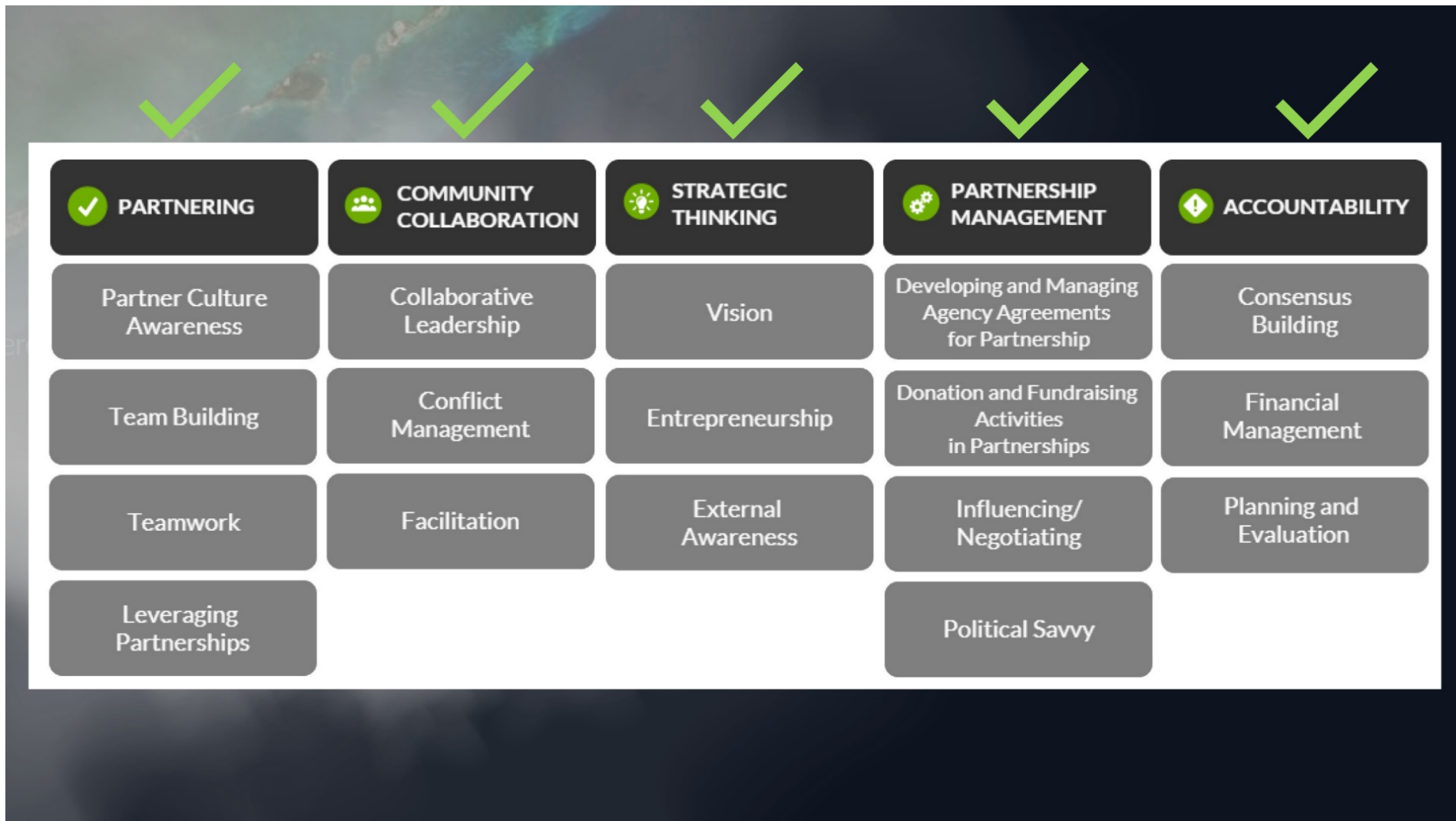




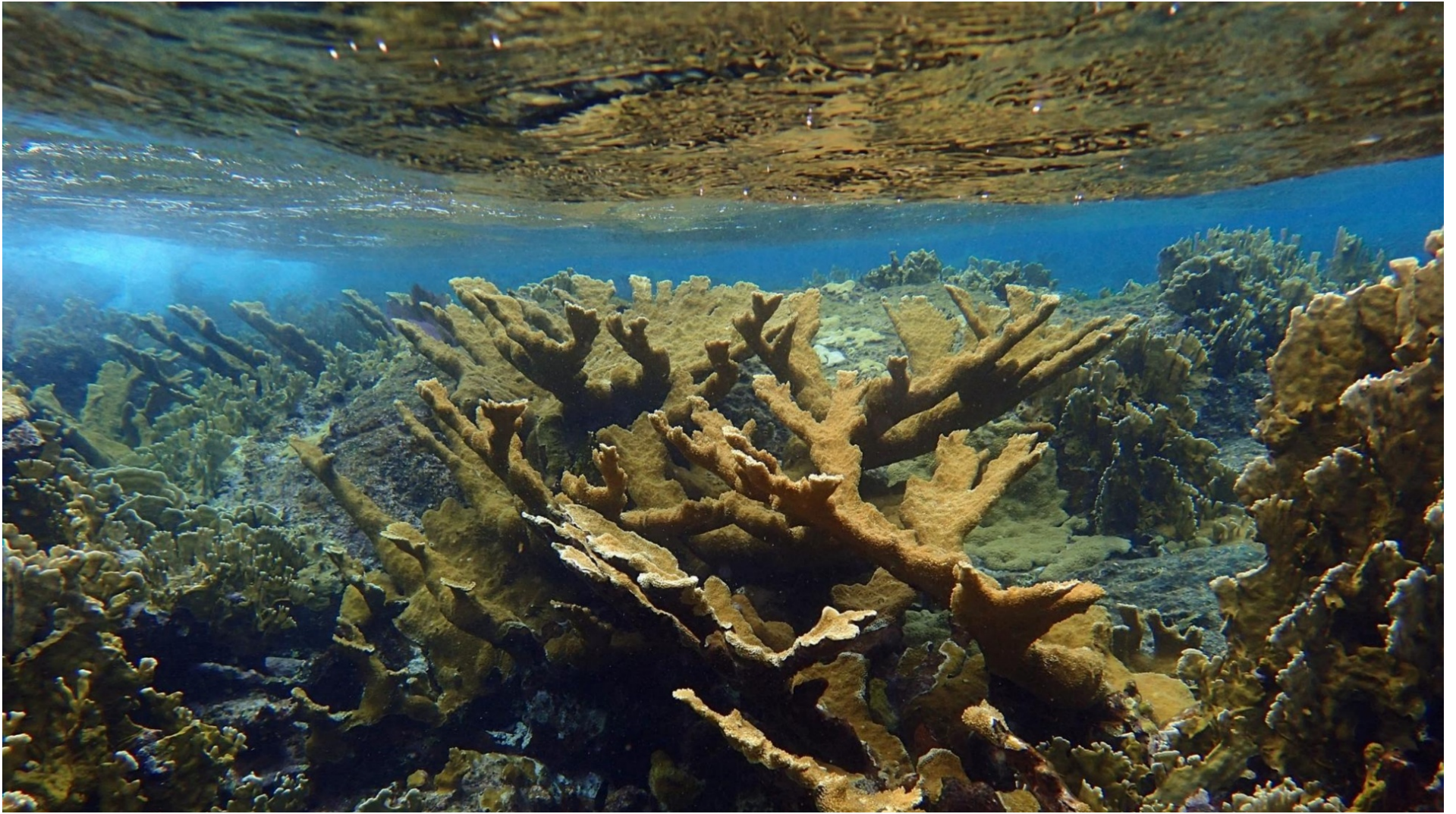














MISSION: ICONIC REEFS



**NOAA
FISHERIES**

Jennifer Moore
Protected Coral Recovery Coordinator



**FLORIDA KEYS
NATIONAL MARINE SANCTUARY**

Earthstar