

Croatan Fireshed Partnership

John Langdon – USDA FS

Partnership Coordinator

Uwharrie and Croatan National Forests



Croatan National Forest



Agenda

- ◇ Great Lakes Fire
- ◇ Partnership Formation
- ◇ Finding a Tempo
- ◇ Current Actions
- ◇ Next Steps



Icebreaker



Mood Setter

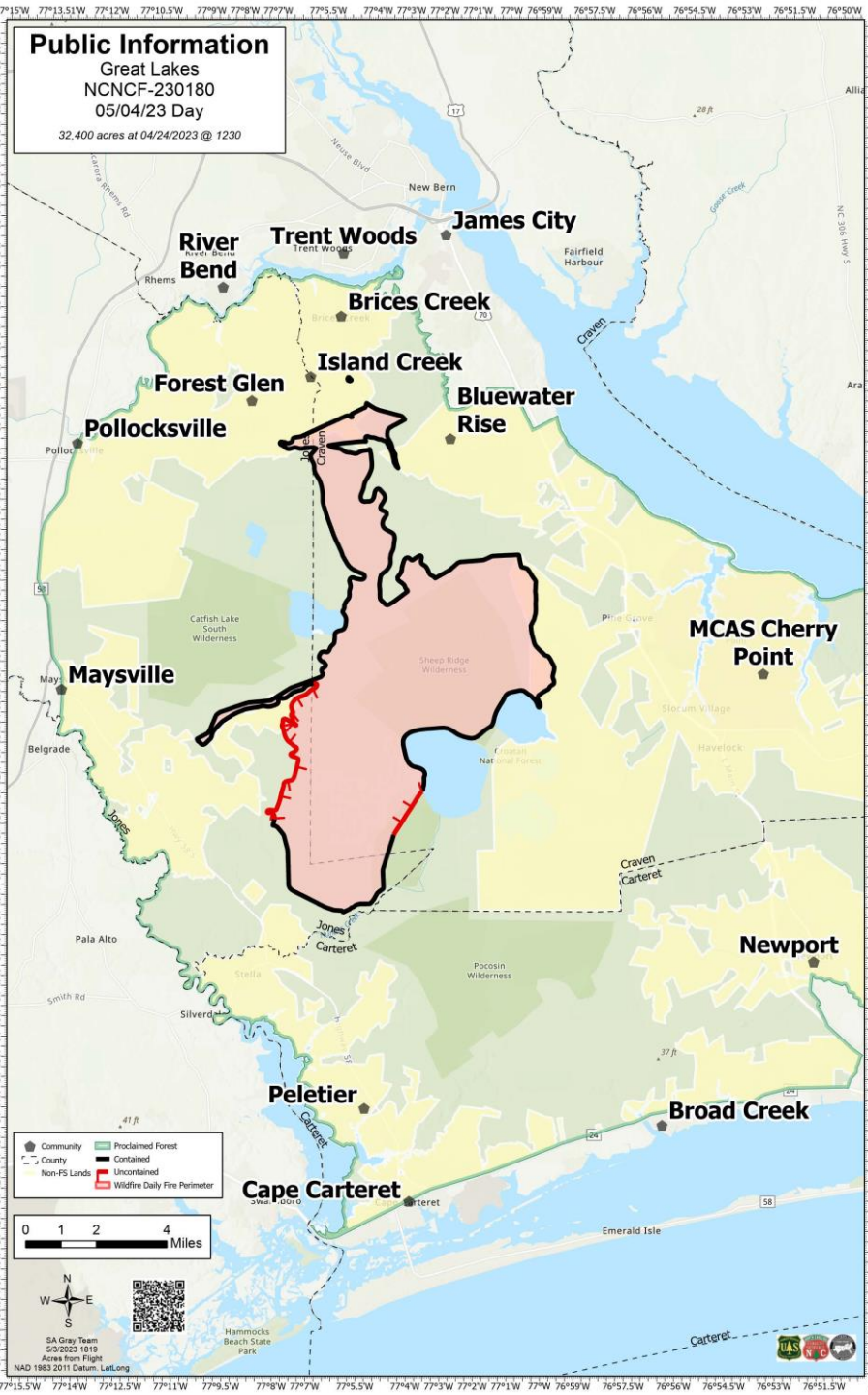
- What is your most consistent source of **daily joy**?



Defend your hill – **Agree** or **Disagree**?

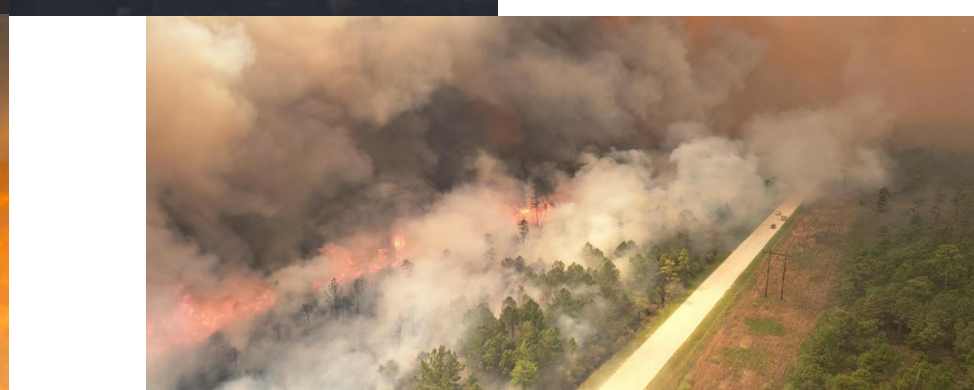
- Socks and sandals are like oil and water: they should **always** be kept separate...period.





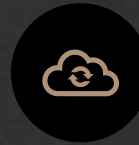
Great Lakes Fire

- ◇ What Happened?
 - ◇ ~32,400 Acres Burned
 - ◇ Volatile Pocosin Fuels – “Swamp on a Hill”
 - ◇ “One More Day” – A statement reminding of catastrophic potential.





Great Lakes Fire (Laying the Egg)



Community Mitigation Assistance Team (CMAT)

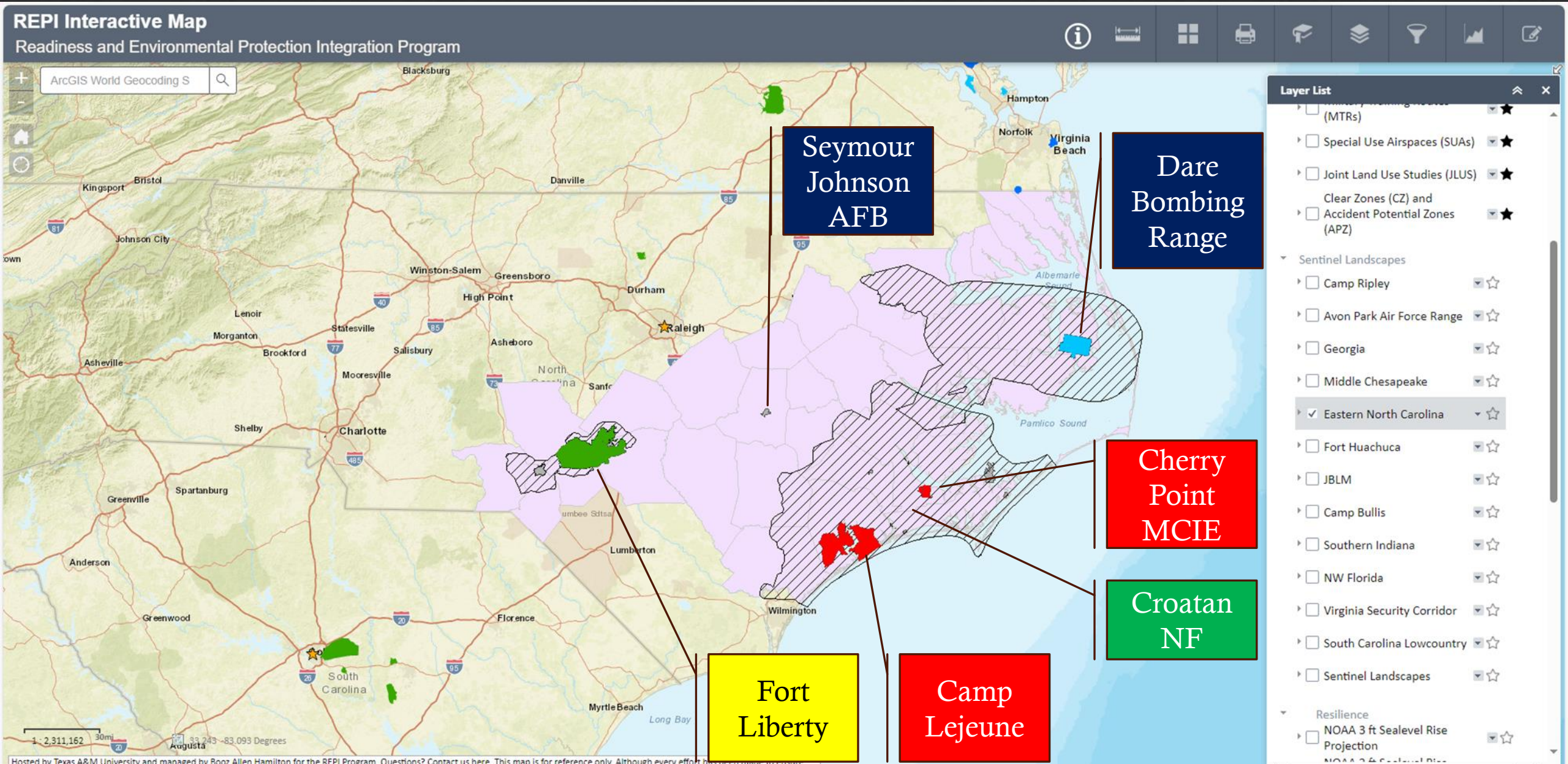


Gathering the Partners with “smoke in the air”



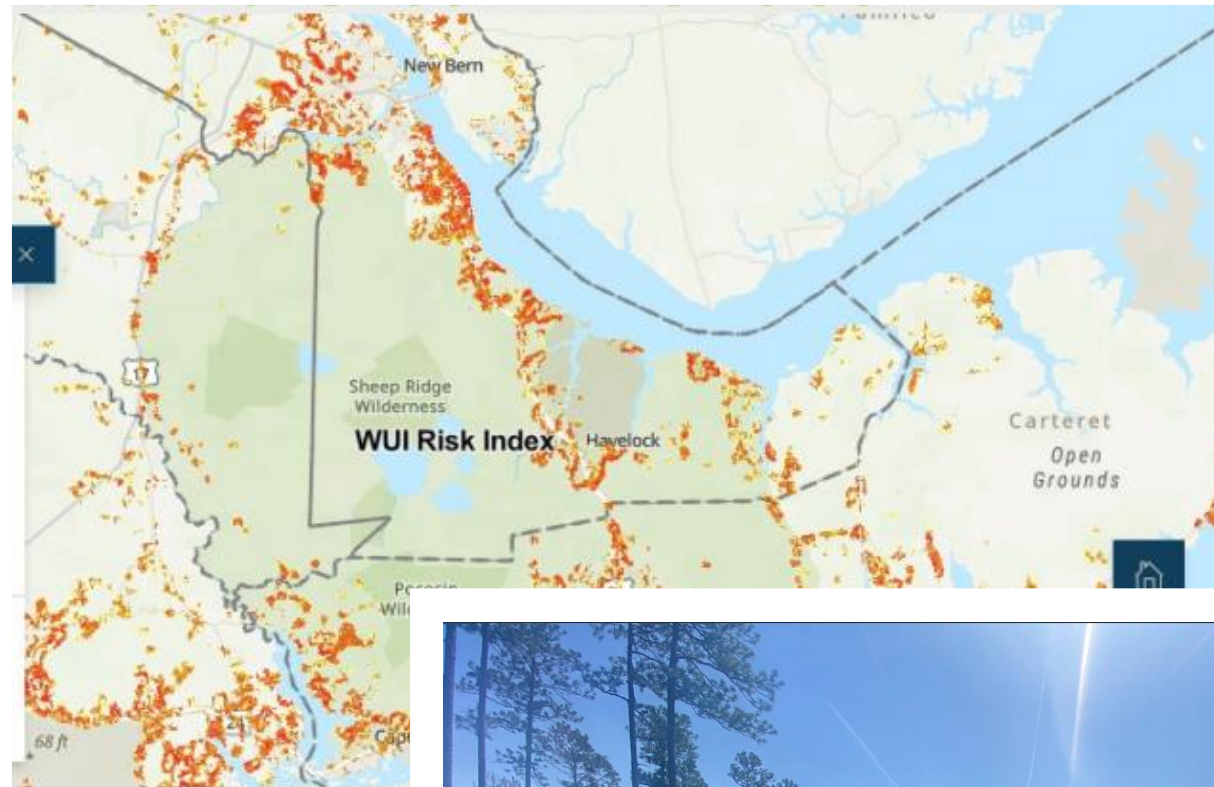
Sentinel landscapes

Eastern North Carolina Sentinel Landscape (ENCSL)



Partnership Formation

- ◆ Post-CMAT
- ◆ Developing a shared purpose



Finding a Tempo

Keeping the motivation and passion up



So much to eat... but where to start??

Factor	Wilder Collaboration Factors Inventory	Factor Average
History of collaboration or cooperation in the community		4.0
Collaborative group seen as a legitimate leader in the community		4.0
Favorable political and social climate		5.0
Mutual respect, understanding, and trust		4.5
Appropriate cross section of members		3.0
Members see collaboration as being in their self-interest		5.0
Ability to compromise		3.0
Members share a stake in both process and outcome		3.7
Multiple layers of participation		3.5
Flexibility		4.0
Development of clear roles and policy guidelines		2.0
Adaptability to changing conditions		4.0
Appropriate pace of development		4.0
Evaluation and continuous learning		3.7
Open and frequent communication		4.0
Established informal relationships and communication links		4.0
Concrete, attainable goals and objectives		4.0
Shared vision		4.0
Unique purpose		5.0
Sufficient funds, staff, materials, and time		3.0
Skilled leadership		4.0
Engaged stakeholders		4.0

As a general rule...
 Scores of 4.0 to 5.0 - strengths, don't need special attention
 Scores of 3.0 to 3.9 - borderline, deserve discussion
 Scores of 1.0 to 2.9 - concerns that should be addressed

Agenda

1. **0900 – 0930 Partnership intros - Intro / Ice breaker**
2. **0930-0935: Meeting Goals**
3. **0935-9:50: Break**
4. **0950 – 1010: CWDG proposals**
5. **1010-1030: Formalizing the partnership**
 - a. **Vision / Mission statement**
 - b. **MOU**
6. **1030 – 1040: Break**
7. **1040-1110: Forest Service – 5-year fire plan**
8. **1110-1150: Partner updates**
9. **1150-1200: Action Plans – Next Meeting(s) - Partner Event Ideas - Subcommittees**

Icebreaker

- **Speed Networking**

- **Instructions**

- Arrange in pairs or small groups.
- 2 minutes timer for each conversation.
- Introduce yourselves, share interests, and ask questions about other partners.
- After the time is up, rotate to the next person, repeat the process.

Current Activities



External

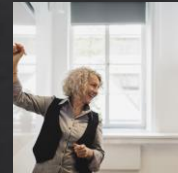


Parcel Level Risk Assessments

Internal



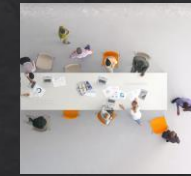
MOU



Definitions



Format



Partnership Culture



Planning Next Steps

Questions / Thoughts?



Do Pupa's Dream?

....ZZZ....-flap-
-flap-...Risk
Mitigation...Icebreakers... Need
to send out a poll...ZZZ...



A COOPERATIVE FOREST FIRE PREVENTION SPECIAL
AMERICAN FORESTRY ASSOCIATION
STATE FORESTERS U.S. FOREST SERVICE
THE ADVERTISING COUNCIL

PUBLISHED AS A SERVICE OF THE AMERICAN FORESTRY ASSOCIATION, 919 SEVENTEENTH ST. N.W., WASHINGTON, D.C.

Situation: Conditions like altered hydrology and the added pressure of growing development further exasperate wildfire risk. Fire return interval show a general pattern of 12 years. Next time the local communities may not be so lucky unless action is taken now.

5 Million

Partner A – Existing SPA
 Partner B – New SPA
 Partner C – New Agreement/ Partner A/B SPA
 Partner D – New Agreement/ Partner A/B SPA

All Funds Spent

Funds Received FY25 Funds obligated FY26 FY27 FY28 All Funds obligated

FY29 FY30 FY31 FY32

Current Condition:

- Many acres close to HAF need conversion to Rx fire
- Lack funding to convert acres to burnable due to high cost
- Require additional capacity to increase from 12k to 24k Rx acres

Current Condition:

- High development activity in the WUI
- WUI risk is not detailed
- Population is traumatized by large wildfire, but memory is starting to fade
- Fireshed coalition is active but needs action.

Current Condition:

- Croatan capacity is limited and needs additional capacity to coordinate program activities (Dozer / GS).
- PBA is new to the area. Additional capacity required for outreach and coordinated Rx burn in WUI.

Implementation - \$2,584,288

Rx fire

Mastication

Force Acct Mechanical

Communication, Public Engagement, Education - \$1 million

RRA PH 1 RRA PH 2 RRA PH 3 RRA PH 4 RRA Final

RA PH 1 RA PH 2 RA PH 3 RA PH 4

Partner A & B WUI home wildfire risk education program

Partner C & D Training program for homeowners threatened by high fire danger near Pocosin fuels

Training and Capacity Building - \$1,415,712

Workload GS12-Program Coordinator GS09-AFMD

PBA Capacity Building Dozer Contract

Desired Condition:

- Double Rx fire eligible acreage
- Increase Rx fire execution from 12k to 24k acres a year
- Increase defensible space in the WUI to a degree which ensures the safety of local communities

Desired Condition:

- Community supports Wildfire Risk reduction efforts (Ordinances / Easements / Rx smoke)
- Create a Common Operating Picture (COP) using parcel level risk data to execute deliberate plans
- Fireshed WUI communities are safer in 2031 than 2023

Desired Condition:

- Fireshed and Croatan NF capacity is sufficient to mitigate risks to homes and communities
- Conditions are set to enable long-term maintenance of burnable acres
- PBA is established in the Croatan area and integrated into community outreach and coordinated Rx burns

End State: Conduct regular Wildfire treatments with an educated population in and around the WUI, many of which are considered socially vulnerable / disadvantaged. The Croatan Fireshed maintains a willing and educated fire wise community with passionate partners. The next major wildfire is contained, and lives and structures are safe.